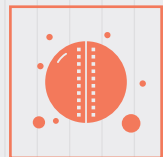
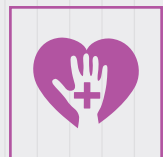


ANNUAL REPORT

2024-25



Board Members



Mr. Manoj Kumar
President



Dr. Sanjeev Phansalkar
Member



Dr. Rajesh Thadani
Member



Mr. Chanakya Choudhary
Member



Dr. Anura Kurpad
Member



Dr. Harish Handerto Hande
Member



Ms. Deepika Warrior
Member



Ms. Shruti Goel
Member



Mr. Sourav Roy
Member



Mr. Ganesh Neelam
Member Secretary

Auditors

M/s Deloitte Haskins & Sells LLP
Statutory Auditors

M/s Grant Thornton Bharat LLP
Internal Auditors

Foreword

The fiscal year 2024–25 marks another important milestone in the journey of Collectives for Integrated Livelihood Initiatives (CInI). Now in our 18th year, our commitment remains unwavering—to listen deeply to the voices of the communities we serve, to co-create solutions with them, and to walk this journey of change together. This journey is sustained by the trust of our collaborators and funding partners, whose support enables us to push boundaries, design scalable models, and strengthen community leadership across all our efforts.

Building on the momentum of recent years, this was a year of both recognition and reflection. The Ashden Award for our Lakhpati Kisan program in 2023–24 was more than a global honour—it was a reaffirmation of the power of community-led transformation in rural livelihoods. It underscored the promise of collaborative development models, grounded in lived realities and bold in ambition.

In 2024–25, our core program areas—Livelihoods, Water, Sanitation & Hygiene, Health & Nutrition, Education & Sports and Renewable Energy—continued to evolve. Across these domains, we have embraced innovation not as an end in itself, but as a tool to solve real problems. From IoT-based systems for safe drinking water to inclusive digital tools that enhance efficiency and participation at the grassroots, our interventions are increasingly shaped by the aspirations and ingenuity of the communities themselves.

This year also initiated the strategic planning process to shape CInI's vision for 2030. We are re-examining our priorities, reflecting on our learnings, and working closely with our partners to co-create a roadmap that is future-ready, bold in imagination, and firmly rooted in the everyday challenges of those we serve. We look forward to sharing this vision with you in the months ahead.

This annual report for FY 2024–25 is a testament to the resilience, commitment, and creativity of our team and partners. I remain deeply grateful to all who continue to walk alongside us in this mission. Together, we will strive to deepen our impact, grow with humility, and build a future that is sustainable, inclusive, and just.

Warm regards,

MANOJ KUMAR
President

Acronyms

ANC	Antenatal Care
AAM	Ayushman Arogya Mandir
BL	Base Line
CG	Chhattisgarh
CHC	Community Health Center
CInI	Collectives for Integrated Livelihood Initiatives
CPHC	Comprehensive Primary Health Care
DRE	Decentralized Renewable Energy
EL	End Line
FHTC	Functional household Tap Connection
FMCHC	Farm Mechanization Custom Hiring Centre
FPC	Farmer Producer Company
FPO	Farmer Producer Organisation
HH	Household
HSS	Health Systems Strengthening
HVA	High Value Agriculture
HWC	Health and Wellness Centre
ICAR	Indian Council of Agriculture Research
IINRG	Indian Institute of Natural Resins and Gums
INR	Indian Rupee
JASBG	Jamgon Adivasi ShetkariBachat Gat
JAS	Jan Arogya Samiti
JJM	Jal Jeevan Mission
JMFPCL	Jagruk Mahila Farmer Producer Company Limited
JVS	Jal Vahini Samiti
KGBV	Kasturba Gandhi Balika Vidyalaya
KMN	Knowledge Management System
LKP	Lakhpatri Kisan Program
LSP	Livestock Service Provider
MHHM	Menstrual (Health & Hygiene Management)
MP	Madhya Pradesh
MPHSSP	Madhya Pradesh Health System Strengthening Project
NCD	Non-Communicable Disease
NTFP	Non-Timber Forest Produce
NTHA	Naval Tata Hockey Academy
PHC	Primary Health Center
PSSK	Prathmik Swasthya Sampark Karyakram
RDC	Regional Development Centre
SAI	Sports Authority of India
SDG	Social Development Goals
SHS	Self Help Group
SHC	Sub Health Center
SMC	School Management Committee
UPHC	Urban Primary Health Centre
VHSNC	Village Health Sanitation Nutrition Committee
WaSH	Water Sanitation and Hygiene
WASMO	Water and Sanitation Management Organization

Index

• ABOUT US	6
• GEOGRAPHICAL OUTREACH	8
LIVELIHOOD	10
Strengthening Livelihoods for Rural Prosperity	12
Puspaben's Small Farm, Big Impact	14
Meena Devi's Journey to Prosperity	15
Hatidandi's Rise to Prosperity	16
WATER SANITATION & HYGIENE	18
Empowering Healthy Change	20
A Mother's Quiet Revolution	22
Couple Counseling is Changing Menstrual Health	23
Meena Devi's Water Revolution and Taps of Change	24
HEALTH & NUTRITION	26
Energising Health & Nutrition	28
Community care gives Nukti Bai new life	30
Centric Health Center in a Tribal area	31
EDUCATION	32
Empowering Futures Through Education	34
Threads of Hope, Pages of Joy	36
The Story of Gram Shiksha Sangam	37
SPORTS	38
Nurturing Talent, Building Futures	40
The Rise of a Young Hockey Star	42
Arpana's Hockey Dream	43
RENEWABLE ENERGY	44
Powering Progress, the Clean Way	46
Solar Insect Traps Are Helping Farmers in Dahod	48
Water and Wealth to Farmers	49
• EVENT GALLERY	50
• AWARDS AND RECOGNITIONS	52
• FINANCIAL STATEMENTS	54
• LEARNINGS & CHALLENGES	57
• OUR PARTNERS	58

About Us



At CInI, we believe enduring change begins with people themselves. Since 2007, Collectives for Integrated Livelihood Initiatives (CInI) has been working alongside rural and tribal communities across the Central Indian belt, fostering aspirations and improving quality of life.

This journey has been continually strengthened by the unwavering support of Tata Trusts, whose strategic guidance, thought leadership, and deep-rooted expertise have helped shape our programs and steer implementation with purpose and precision.

Our focus is clear: to enable communities to rise, lead healthier lives, and secure a dignified future. Over the years, CInI has evolved into an ecosystem of sustainable solutions – deeply rooted in local needs and proven to scale and replicate effectively. Our programs span Livelihood, Education, Water Sanitation & Hygiene (WaSH), Health & Nutrition, Renewable Energy and Sports. Yet, our approach remains consistent: “Community at the Center”. Systems, processes and strategic partnerships serve as key enablers that ensure meaningful, lasting impact. Our flagship program, Lakhpatri Kisan(TM), has enabled over 1.5 lakh tribal families to rise out of poverty through sustainable and resilient means. In health, we’ve demonstrated over 600 Ayushman Arogya Mandirs as model facilities, delivering quality-assured primary healthcare services to about 30 lakh dependent population. Ongoing efforts are improving the quality of education for over 2.5 lakh children, providing access to safe drinking water for 20,000+ households and supporting over 55,000 women and girls through the MHHM program. Nearly 38000 structured coaching sessions have helped children develop hockey skills and a love for the game within their communities.

The success of our initiatives lies in our ability to clearly articulate the need and act with intent – anchoring our interventions on the pillars of economic stability, social well-being and environmental stewardship.

CInI aspires to be more than a development organisation - a catalyst for transformative change - bridging the divide between community and systems, knowledge and emerging technology. After 18 years of committed work, we believe our journey has only just begun. Every step forward is driven by the conviction that communities - when trusted and supported - shape their own path to lasting prosperity.



Vision

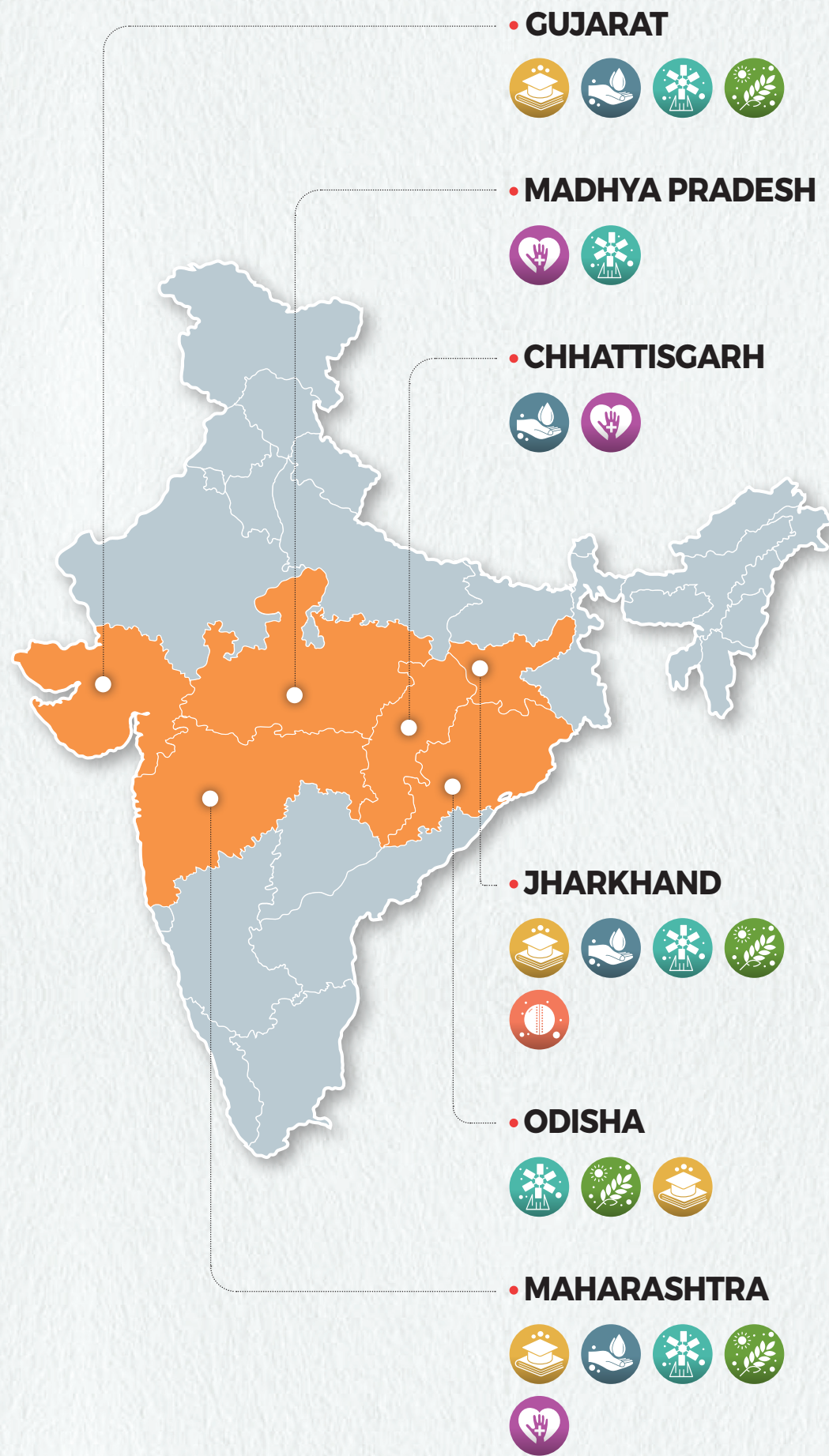
MAKING A SUSTAINABLE DIFFERENCE IN THE QUALITY OF LIFE OF RURAL AND TRIBAL COMMUNITIES IN THE CENTRAL INDIAN TRIBAL BELT.

Mission

BRINGING OVER 5,00,000 HOUSEHOLDS IRREVERSIBLY OUT OF POVERTY WITH AN INCREASED QUALITY OF LIFE.



Geographical Outreach



Highlights



Livelihood

Households Benefitted

1,56,747



WaSH

Households Benefitted

30,000+



Health & Nutrition

Individuals with Equitable Access

7.5 Lakh+



Education

Outreach to Children

3,02,887



Sports

Coaching Sessions Conducted

37,980



Renewable Energy

Households Benefitted

3,76,718





LIVELIHOOD

LIVELIHOOD

From Cotton Fields to a Thriving Farm

“

We used to grow only cotton and often struggled with water and money. Things changed after we joined Lakhpati Kisan 2.0 program. Inspired during an exposure visit, we adopted solar lift irrigation, drip, and mulch. I began vegetable farming on one acre and earned Rs.2.12 lakh in 2023–24. Encouraged, I expanded and earned Rs.6.30 lakh in 2024–25. With this income, we added another drip unit and bought an auto-rickshaw to sell our vegetables. Farming is no longer a struggle—it's our strength.

”

PRATIMA BIRJU MOHURLE

Katvali village, Ballarpur block,
Chandrapur district, Maharashtra

Strengthening Livelihoods for Rural Prosperity

Empowering tribal communities through sustainable agriculture, entrepreneurship, and collective action, CInI's Livelihood initiatives foster resilience, income growth, and dignity.

C InI continues to advance its mission of enabling dignified and sustainable livelihoods across Gujarat, Odisha, and Maharashtra. With a focus on improving household income and resilience, the approach integrates agriculture, allied activities, and enterprise development while placing women and community institutions at the centre.

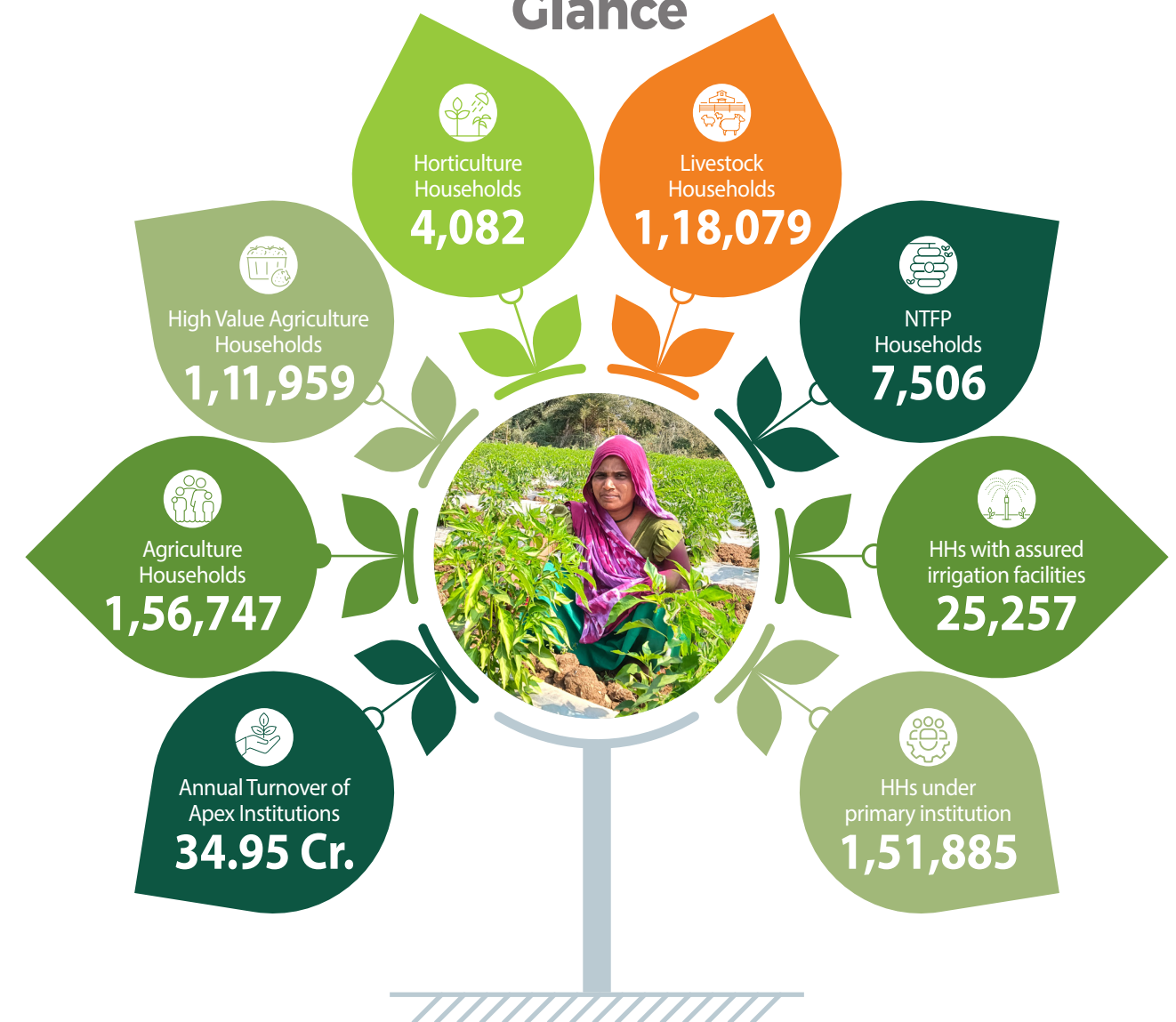
Farmers are adopting more diverse and climate-resilient cropping systems, moving beyond mono-cropping to include vegetables, pulses, fruits, and cereals. Improved access to irrigation, quality inputs, and technical training has led to increased productivity and more secure incomes. Women play a critical role in this transformation. Through Producer Groups (PGs) and Farmer Producer Company (FPCs), they are leading

collective farming, running small enterprises, and participating actively in local value chains—enhancing both income and agency.

To reduce dependence on seasonal agriculture, CInI promotes allied activities such as goatery, backyard poultry, piggery, and horticulture. These provide additional income streams and help families withstand climate or market shocks. At the same time, there is a growing shift towards innovation-led livelihoods, such as protected cultivation and improved nursery management.

CInI is also strengthening Farmer Producer Organizations and producer collectives to improve aggregation, bargaining power, and market access. These efforts help farmers retain more value from their produce and engage with markets on better terms.

At a Glance



Key Outcome

Significant rise in household income where integrated farming and allied activities are adopted, with many families crossing ₹1 lakh annual income threshold.



Gender Impact

Women's leadership in livelihoods is not only improving incomes but also transforming household roles and decision-making power.



PUSPABEN
AMITBHAI GANAVA,
JUNAVADIYA VILLAGE, GUJARAT

Strawberries of Change: Puspaben's Small Farm, **Big Impact**

A tribal woman farmer grows success—and strawberries—on a tiny plot, inspiring a movement for change.

In the tribal village of Junavadiya, Puspaben Amitbhai Ganava, a smallholder farmer with just 0.12 acres of land, dared to dream beyond traditional crops. With no prior experience but strong determination, she chose to cultivate winter-down variety strawberries—a high-value crop not commonly grown in the area.

Backed by technical support and driven by her own commitment, Puspaben completed 22 harvests, producing 115 kilograms of strawberries. Her efforts earned her ₹28,750, a significant income for a farmer with such a small plot. But beyond the earnings, it brought her something even more valuable—self-confidence and recognition.

"I believed that with hard work, I could start something new. Strawberry farming showed me that even with little land, we can grow good produce and earn better," says Puspaben, proudly.

Her story is not just about farming—it's about breaking mindsets. Through innovation, persistence, and a willingness to try something new, Puspaben is inspiring other tribal farmers to explore high-value crops as a pathway to prosperity. She is proof that transformation doesn't always need scale—it just needs courage.

"
I believed that with hard work, I could start something new. Strawberry farming showed me that even with little land, we can grow good produce and earn better.
"
Puspaben



Breaking Barriers with Piglets: Meena Devi's **Journey to Prosperity**

A courageous woman Meena Devi turns community resistance into rural success through pig farming and entrepreneurial spirit.

MEENA DEVI,
BAHERA VILLAGE, HAZARIBAGH DISTRICT, JHARKHAND



In Bahera village, Hazaribagh, 32-year-old Meena Devi once struggled to support her family through traditional farming. In 2017, she joined the Lakhpatri Kisan Smart Village Program, supported by CInI and Tata Trusts, in search of a better future.

While her community discouraged pig rearing, Meena chose to challenge social norms. With ₹70,000 in loans, ₹80,000 in grant support, and hands-on training from the SUPPORT team, she began with just eight piglets. Her determination and skill turned a bold decision into a thriving enterprise.

Between 2020 and 2025, Meena sold 407 piglets, generating ₹15 lakh in revenue and a net profit of ₹8.27 lakh after expenses. Even during the COVID-19 crisis, she sustained her business by innovatively preparing pig feed from farm waste and maintaining livestock health.

Today, Meena earns over ₹2 lakh annually, with plans to scale her income to ₹3.5 lakh. Her success has not only elevated her family's living standards but also inspired 41 others across Jharkhand to take up pig entrepreneurship.

Her story is a powerful example of how resilience, innovation, and the right support can break social and economic barriers—paving the way for inclusive rural growth.

Seeing the success of the overall model, now it has been expanded in different location of Jharkhand. The Details are as follows:

Sl.No	Block Name (District Name)	No. of Entrepreneur
1	Churchu (Hazribagh)	21
2	Murhu (Khunti)	17
3	Tundi (Dhanbad)	4
	Total	42

"
People once mocked me. Now, they look up to me.
"
Meena Devi

“

Earlier, we thought our income would never grow without proper roads. Now, with CInI and the FPC, it feels like everything can change.

Malati Hembram



From Forest Shadows to Market Shelves:

Hatidandi's **Rise to Prosperity**

A remote tribal village transforms through farming innovations—led by women like Malati Didi.

MALATI HEMBRAM, HATIDANDI VILLAGE,
KEONJHAR DISTRICT, ODISHA



In the forested hills of Keonjhar, Odisha, Malati Hembram, affectionately known as Malati Didi, lived in the small tribal village of Hatidandi, home to just 13 households. Life here was harsh. With no market access or irrigation facilities, families grew only a little paddy and survived on daily wage work and forest produce. For years, Malati believed her family's poverty was unchangeable.

Everything began to shift when CInI's Lakhpatri Kisan Yojana reached Hatidandi. Through the project, Malati and her neighbors received support for solar-powered water-lifting systems, drip irrigation, and training in vegetable cultivation. For the first time, the women of the village saw farming as a pathway to prosperity.

The real breakthrough came with their connection to the Sakam Sindur Farmer Producer Company (SSFPC). The FPC's electric vehicle outreach helped farmers access quality inputs and sell their produce directly in the market—cutting out middlemen and increasing income.

Today, all 13 households in Hatidandi are part of the program. Their average annual income has risen to ₹1.5 lakh, and the community now grows and sells vegetables with confidence and dignity. Hatidandi's story shows that with the right tools, knowledge, and partnerships, even the most remote corners can grow into centers of rural prosperity.



WATER SANITATION & HYGIENE

Water, Women, and Change

“

As a Jal Sahiya, I've seen how access to water changes lives. In Jarba, I helped connect 386 households to tap water and facilitated Rs.1.78 lakh in tariff collection—pushing us toward self-reliance. I introduced QR code payments and Water Passbooks for transparency. I also monitor water quality and lead drives on hygiene, sanitation, and conservation. Step by step, we've transformed Jarba into a model village. I believe when women lead, progress flows.

”

POONAM DEVI

Jal Sahiya, Jarba village, Churchu block, Jharkhand



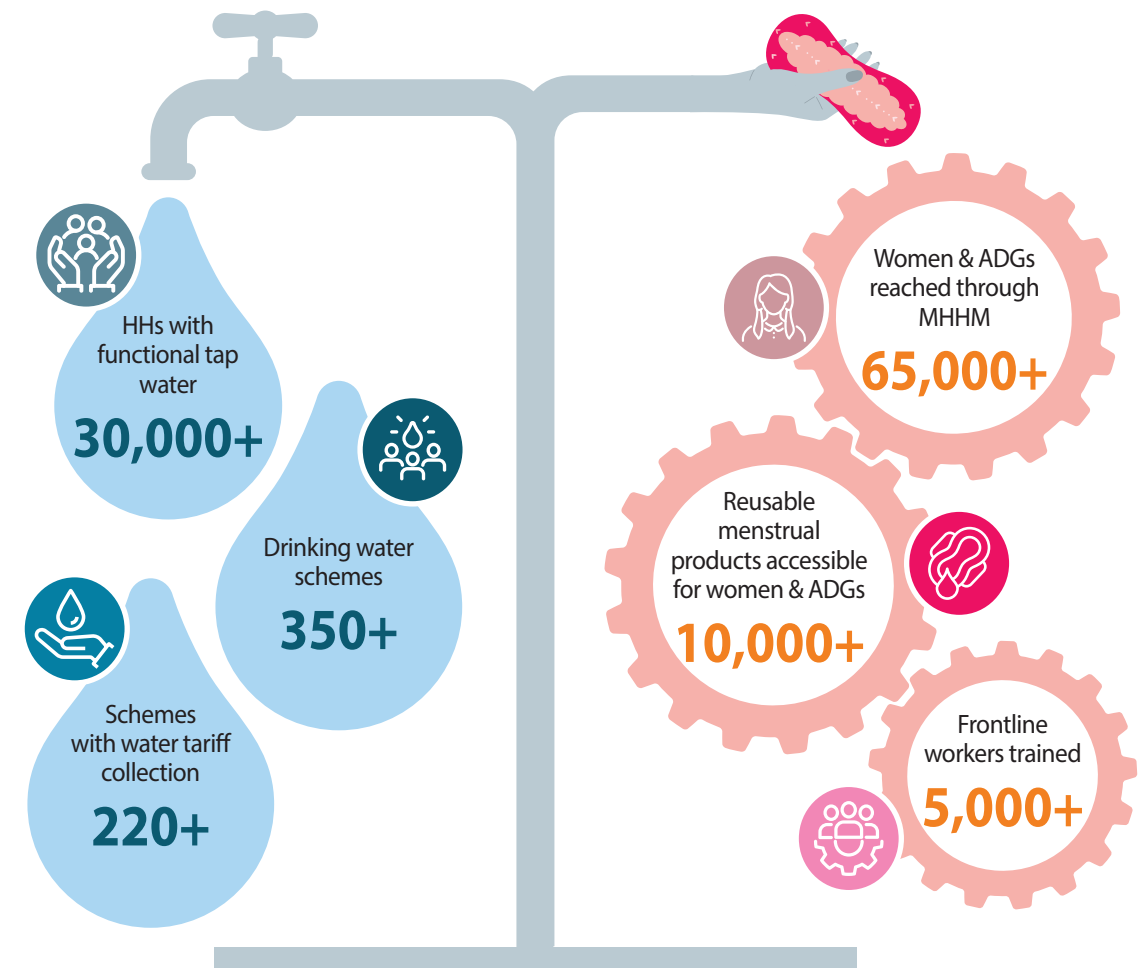
Empowering Healthy Change

CInI's WaSH initiatives empower tribal communities by improving access to safe water, sanitation, and hygiene through sustainable, community-led solutions.

In the last year, CInI deepened its work on Water, Sanitation, and Hygiene (WaSH) across tribal communities in Gujarat, Jharkhand, Maharashtra and Chhattisgarh with a focus on building sustainable systems rooted in local ownership. The approach combined physical infrastructure development with community mobilisation, behaviour change, and institutional strengthening. In Gujarat and Jharkhand, the focus remained on ensuring

water security and functional household access through partnerships with state initiatives. Local institutions were activated and trained to take charge of water governance. Villages began managing their own systems, collecting tariffs, and planning for long-term sustainability. Alongside infrastructure repairs and the adoption of renewable energy for water systems, communities were engaged through events and campaigns to strengthen awareness and participation.

At a Glance



The Menstrual Health and Hygiene Management (MHM) initiatives continued across the intervention geographies creating an inclusive, stigma-free environment for the target groups including women & men, girls & boys, and frontline workers. Local production of reusable menstrual products was promoted to improve accessibility and reduce environmental impact. Infrastructure improvements in schools and health camps at the community level addressed both dignity and health needs, while sensitization efforts helped reshape social attitudes.

Apart from Gujarat, Maharashtra & Jharkhand this year CInI also initiated an integrated WASH intervention in Chhattisgarh focusing on Water Source Management & Conservation, WaSH in Schools and Menstrual Health & Hygiene Management, covering 03 villages and 07 government schools of Durg district.



CInI's efforts were further reinforced through convergence with government schemes and capacity building at the grassroots level, paving the way for long-term impact.



KALNIBAI,
KALIBEL VILLAGE, DHADGAON
BLOCK, MAHARASHTRA

From Silence to Support: A Mother's Quiet Revolution

An elderly mother in rural Maharashtra adopted menstrual health education, inspiring change and empowering the next generation through simple yet impactful actions.

At 58, long past her own menstrual years, Kalnibai from Kalibel village in Dhadgaon Block chose not to stay silent on the subject of menstrual health. Despite having reached menopause, she attended every session on Menstrual Health Management (MHM) conducted by the Community Resource Persons (CRPs) in her village—listening intently, asking questions, and absorbing information with deep curiosity.

In one such session, Kalnibai was introduced to reusable cloth pads—hygienic, affordable, and eco-friendly. Though she wouldn't use them herself, she saw an opportunity to make a difference in her daughter Ratna's life. She purchased Eco-Femme reusable pads for her, replacing the discomfort and embarrassment of unsafe alternatives with a gesture rooted in care and dignity.

Kalnibai's decision was more than just a gift—it was a message: that women of any age can lead change, that menstruation is not taboo, and that knowledge is meant to be shared. Through her quiet leadership, she not only empowered her daughter but also challenged generations of silence surrounding menstruation in her community.

“I learned something new, and I wanted my daughter to benefit from it.”

Kalnibai



Breaking Taboos, Together: Couple Counseling is Changing Menstrual Health

A couple in rural Gujarat challenged menstrual taboos through counselling, transforming silence into support and stigma into understanding.

MEENABEN & DILIPBHAI,
DABHADA VILLAGE, DAHOD DISTRICT, GUJARAT



In Dabhada village of Dahod district, menstruation was once a subject of silence and shame. Meenaben, like many women, used old cloth hidden under her skirt, drying it in darkness to avoid judgement. Cultural restrictions meant she couldn't cook during her period, and her family refused food prepared by her. Her husband, Dilipbhai, had little awareness about menstruation or the emotional and physical challenges it brings.

Through the Menstrual Health and Hygiene Management (MHM) program by CInI, both attended gender-specific sessions followed by a joint couple counseling module. Meenaben learned safe hygiene practices and gained the confidence to challenge social taboos. Dilipbhai, for the first time, understood menstruation, reproductive health, and the science behind sex determination. This created a space for honest dialogue, respect, and support within the household.

Today, Meenaben prepares meals even during menstruation, and Dilipbhai buys menstrual products for his family. Their story is part of a larger shift in tribal communities where eight couples have undergone similar counseling, fostering acceptance, empathy, and change.

By engaging both men and women through couple counseling, the MHM program is fostering a more informed and supportive community.

“We now dry cloths openly in sunlight. I cook during my periods, and my family eats without hesitation.”

Meenaben

I once blamed my wife for daughters. Now I know better. I support them fully—even buy menstrual cloths..

Dilipbhai

Community-Wide Impact



Increased awareness and acceptance of menstrual hygiene practices.



Improved family planning decisions.



Greater sensitivity among men toward the needs of women during menstruation.



Reduction in stigma and taboos surrounding menstruation.



Quenching a Village's Thirst: Meena Devi's Water Revolution

In water-scarce Indra village, Meena Devi's leadership brought sustainable access and community-driven water governance.

MEENA DEVI,
INDRA VILLAGE, CHURCHU BLOCK, JHARKHAND



Just a few years ago, the people of Indra village faced daily hardship due to water scarcity. Women walked 1.5 km each day to fetch water, often uncertain whether they'd return with full pots. Among them was Meena Devi, the village Jal Sahiya, who decided to change this reality.

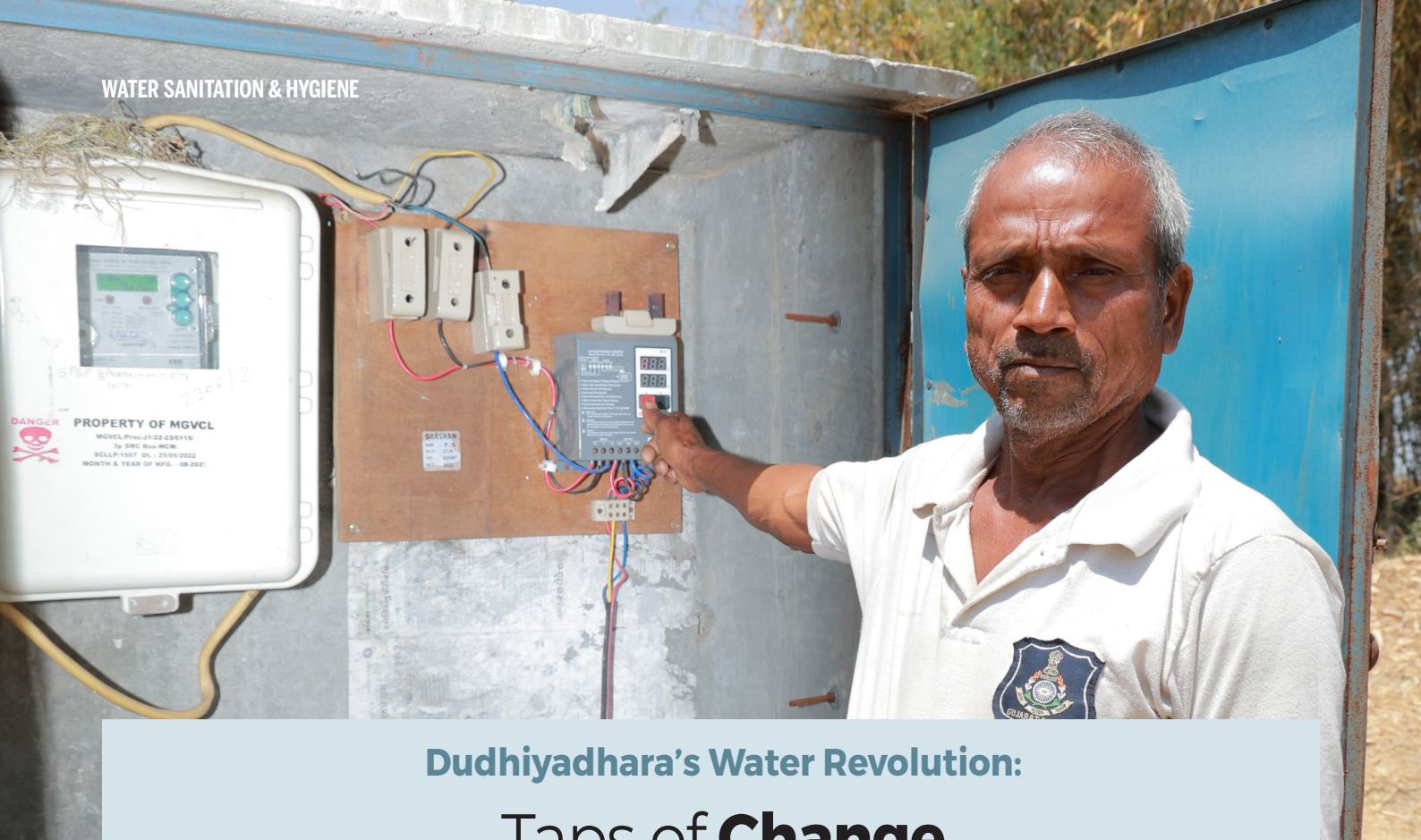
With training and handholding support from CInI-Tata Trusts, Meena Devi took the initiative to strengthen local water governance. She collaborated with the Panchayat and played a key role in implementing the Churchu West Multi-Village Water Supply Scheme. Recognizing the need for community-led systems, she helped form a strong and inclusive Multi-Village Water and Sanitation Committee (MVWSC).

Meena introduced a structured tariff collection system and water passbooks to promote transparency and accountability. The committee has since mobilized ₹90,535 in water tariffs, ensuring financial sustainability. Through regular engagement and awareness efforts, she encouraged community participation, fostering a strong sense of ownership among residents.

CInI's support in building the capacity of Jal Sahiyas, facilitating committee formation, and introducing digital tools played a critical role in enabling this transformation.

Today, Indra village has moved from water scarcity to equitable and sustainable access, with Meena Devi at the forefront of this change. Her leadership has shown how empowered women and informed communities can lead revolutions—even with something as basic, and vital, as water.

“The committee successfully mobilized ₹90,535 in water tariffs—an important step toward financial sustainability.”



Dudhiyadhara's Water Revolution: Taps of Change

In Dudhiyadhara village, a community-led water initiative transformed daily life, ensuring reliable access to safe drinking water for all.

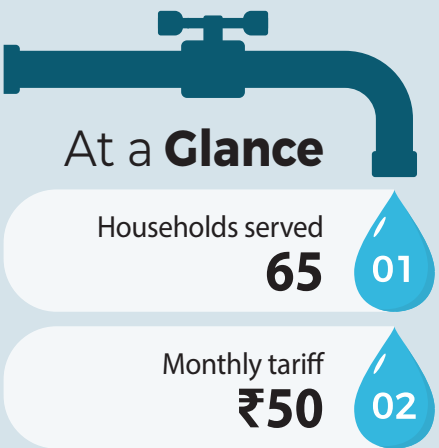
MR. RAMAN BHAI, DUDHIYADHARA
VILLAGE, LIMKHEDA, GUJARAT



Dudhiyadhara village in Limkheda once struggled with poor water access, especially for women and children who spent hours daily fetching water from unsafe sources. To address this, the community partnered with the Jal Jeevan Mission and CInI to design a sustainable, water management system. Central to this transformation was Mr. Raman Bhai, whose leadership became the backbone of the initiative.

With support and training from CInI a pani samiti (village water committee) was formed, that took full responsibility for operations and maintenance.

With extensive training and handholding from CInI, the committee built a reliable drinking water system that now delivers water directly to homes, drastically reducing physical burden and improving hygiene. The introduction of a modest monthly tariff helped cover maintenance costs and foster



financial ownership. When faced with infrastructure failures—like motor burnouts and power cuts—the community acted swiftly under the leadership of Mr. Raman Bhai, who championed both problem-solving and long-term planning.

To mitigate power-related disruptions, solar energy was integrated into the system, extending services to more households. Today, Dudhiyadhara stands as a model of how empowered leadership, community participation, and simple innovation can transform rural lives.



HEALTH & NUTRITION

HEALTH & NUTRITION

Timely Care, Prompt Service

“

During my routine check-ups, I noticed a pregnant woman's blood pressure was slightly high. I made sure she received timely care and constant monitoring. Because we caught it early, she followed the guidance properly—and delivered a healthy baby. As an ASHA, nothing feels more rewarding than knowing your small action can save lives. Early detection and support truly make all the difference.

”

SANGITA SAWNER

ASHA, AAM
Sirpur, Khandwa, Madhya Pradesh

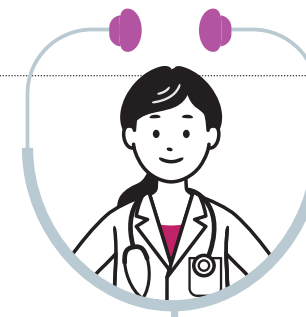


Energising Health & Nutrition

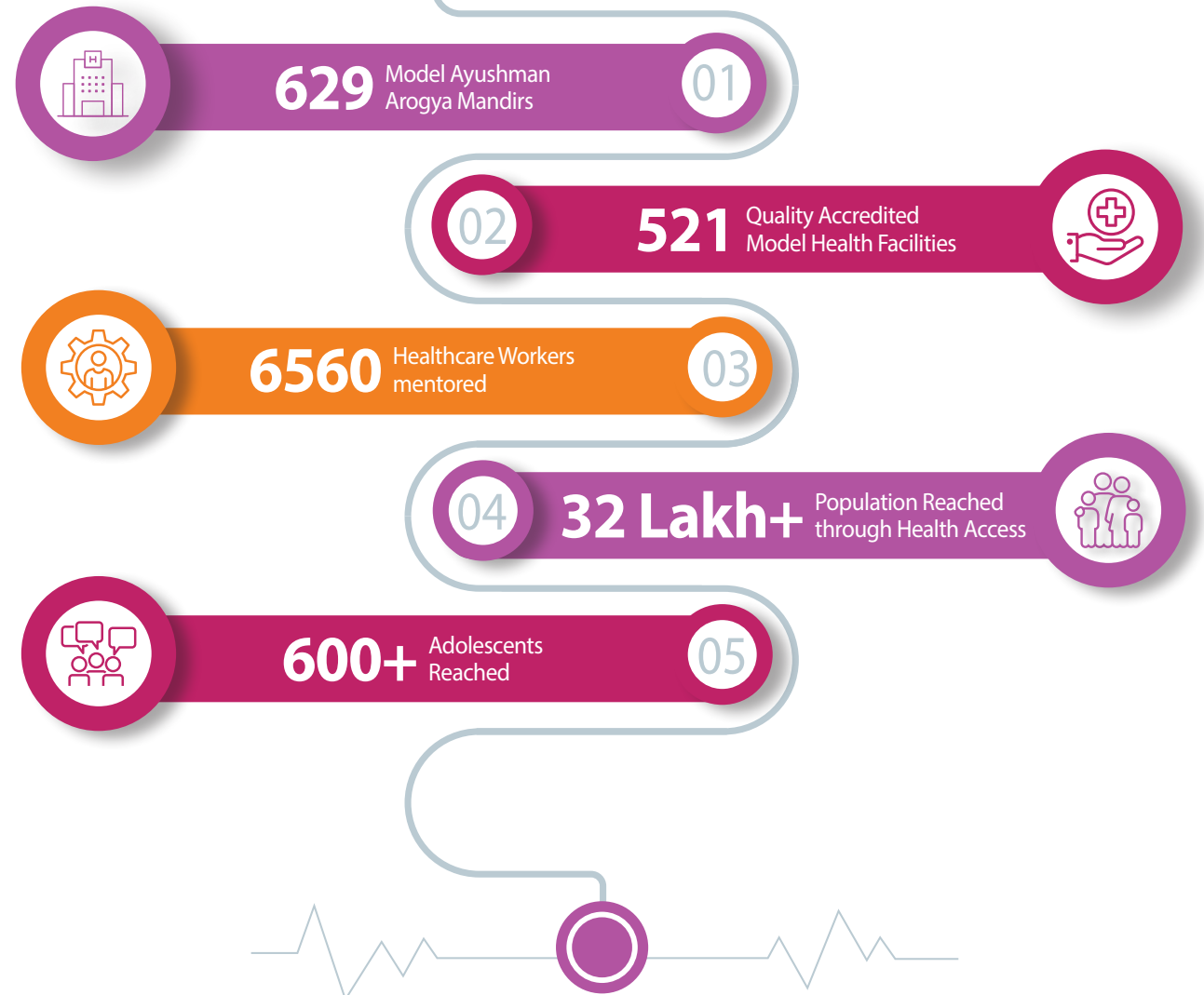
CInI is strengthening rural health systems with community focus for enabling Equity & Access.

Rural communities have limited access to health and nutrition due to inadequate infrastructure, skill gaps, low awareness, and weak community linkages. Adolescents in particular, struggle with nutritional deficiencies and mental health issues, further compounded by socio-economic inequality and weak coordination between schools and health centers. CInI's interventions in Maharashtra, Madhya Pradesh and Chhattisgarh focus on systems strengthening and community integration to address these challenges.

In Madhya Pradesh, CInI's Health System Strengthening Project, expanded its model approach to 600+ Ayushman Arogya Mandirs, in collaboration with the State NHM and Tata Trusts. Key achievement being the accreditation of 150+ facilities on the National Quality Assurance Standards, improving access to equitable healthcare for over 7.5 lakh rural citizens. Learnings & best practices were disseminated among stakeholders for further adoption. Pratham Swasthya Sampark Karyakram (PSSK) sessions held at govt. medical colleges strengthened collaboration between the medical education & primary healthcare system.



At a **Glance**



In Maharashtra, CInI intensified its community-based Nutrition initiative (CBNI) across 21 villages, focussing on dietary diversity and meal planning, through social & behavioural change communication. The intervention empowered women as Nutrition Champions "Jijamata Sevikas", to promote healthy practices, identify malnutrition (SAM and MAM) cases, and connect households to the healthcare system.

In Chhattisgarh, CInI integrated adolescent health initiatives, Nutrition and mental health over its WaSH in Schools project, benefiting 900 students across 7 schools in Durg district.



Through convergence with national programs, adoption of standard guidelines, knowledge partnerships with regional Institutions and capacity building of the frontline workers, CInI ensures sustainable, community-driven health outcomes



NUKTI BAI,
AAM-KANWADA, DISTRICT
ALIRAJPUR,
MADHYA PRADESH

Reaching the Unreached : Community care gives **Nukti Bai** new life

A vulnerable elderly woman in a tribal area, regained dignity and enrichment through doorstep palliative care in tribal Alirajpur.

In the forested hills of Kanwada village, 79-year-old Nukti Bai, bedridden and breathless due to chronic asthma, spent her days in silence. With no access to transport and poor awareness restricting timely healthcare decisions, her condition remained untreated. Her family members, being agricultural labourers, had neither the means nor the knowledge to seek appropriate health support.

The situation began to change when the ASHA worker, mentored under CInI's MP Health Systems Strengthening Project, surveyed the area as part of an initiative to strengthen Elderly and Palliative Care under Ayushman Aarogya Mandir (AAM) at Kanwada, Alirajpur.

Once identified, the Community Health Officer (CHO), along with the ANM and ASHA, stepped in and initiated home-based palliative care for Nukti Bai. Team AAM, trained in basic nursing and emotional care, administered Theophylline syrup for breathlessness, Diclofenac for pain, conducted regular check-ups, and offered psychological counselling.

Nukti Bai gradually turned towards the path of recovery. Today, she walks within her home unaided, breathes easier, and smiles with gratitude. Her story is a powerful testimony to how timely, community-based interventions can restore dignity, build trust, and ensure healthcare for the last mile.

“
At this age, you
treated me at home
with such care—
thank you so much,
may God bless you.

Meena Devi



A Mother's Strength, A Baby's Fight: A Journey from **Risk to Recovery**

In Kharda, timely intervention saved a severely anaemic mother and her 1100-gram newborn, inspiring community trust in healthcare services.

MRS. KALUBAI SUBHASH VALVI, Kharda Village, Dhadgaon Taluka,
Nandurbar District, Maharashtra



In May 2024, Kalubai Subhash Valvi returned to her maternal home after six months of hard labour cutting sugarcane in Pandharpur. With no access to health services during this time, she received no iron supplements, vaccines, or check-ups. Tired and anaemic, she gave birth at home to a baby girl weighing just 1100 grams.

The baby was extremely weak. When Kalubai returned to her in-laws' house in Kharda, her family—unaware of the medical urgency—thought the baby was cursed. They called a local faith healer instead of seeking help at a hospital.

That's when CInI's trained Nutrition Champion stepped in. Sensing the danger, she quickly coordinated with ASHA, Anganwadi workers, and the local health team. After hours of counselling and resistance from the father, the team managed to convince the family. On 8th May, both mother and baby were taken to the hospital with oxygen support. Kalubai was treated for severe anaemia with three bottles of blood. The baby was admitted to SNCU. Later, Kangaroo Mother Care was started at home, with regular follow-ups. Now, three months later, the baby weighs 6.7 kg and is active and healthy. Kalubai is recovering well too.

This life-saving intervention didn't just support one mother—it helped build awareness across the village. More women in Kharda now attend antenatal check-ups, trust trained health workers, and choose safe deliveries.

“
The survival
of Kalubai and
her daughter
has fostered
renewed trust
and attention
toward the
CBNI program
in Kharda. The
community
is now more
aware of the
importance
of antenatal
care and
institutional
deliveries.

”

Community Based Nutrition Approach

1. Screening & Identification
2. Strengthening awareness on Breastfeeding Practices
3. Ensuring Supplementation of Iron folic acid, Calcium etc.
4. Referral linkages to NRCs

Outreach **Numbers**



1201
Pregnant
Women



1157
Lactating
Women



291
SAM
Children



EDUCATION

EDUCATION

A School Reborn Through Stories

“

When I was first posted in Kalahandi, the school was falling apart—broken walls, messy surroundings, and only 20 irregular students. I knew I had to change that. I stayed extra hours to make the place welcoming. CInI’s training in FLN and library helped a lot, especially storytelling. I tell stories every day—it builds confidence, improves vocabulary, and keeps students engaged. Slowly, the children started coming regularly, parents got involved, and learning outcomes improved. Today, 47 children fill the school with energy and joy. This is just the beginning.

”

SENAPATI

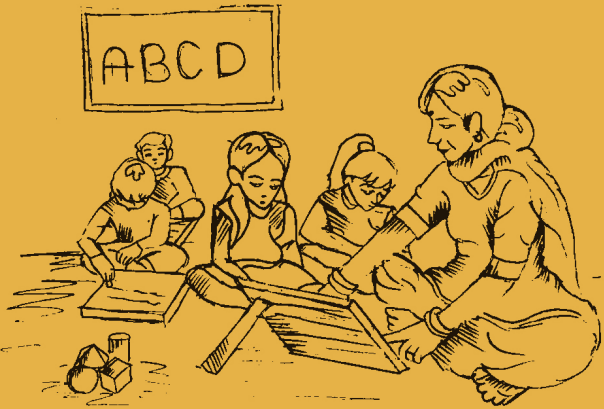
Primary School Teacher,
Kalahandi, Odisha




Empowering Futures Through Education

CInI empowers children through inclusive, community-led learning models that strengthen systems, enrich academics, and inspire lifelong curiosity.

Collectives for Integrated Livelihood Initiatives (CInI) believes education is key to sustainable development and social change. Over the past 17 years, CInI has worked across Jharkhand, Odisha, and Gujarat, partnering with communities and government bodies to improve education access and quality for marginalized children.

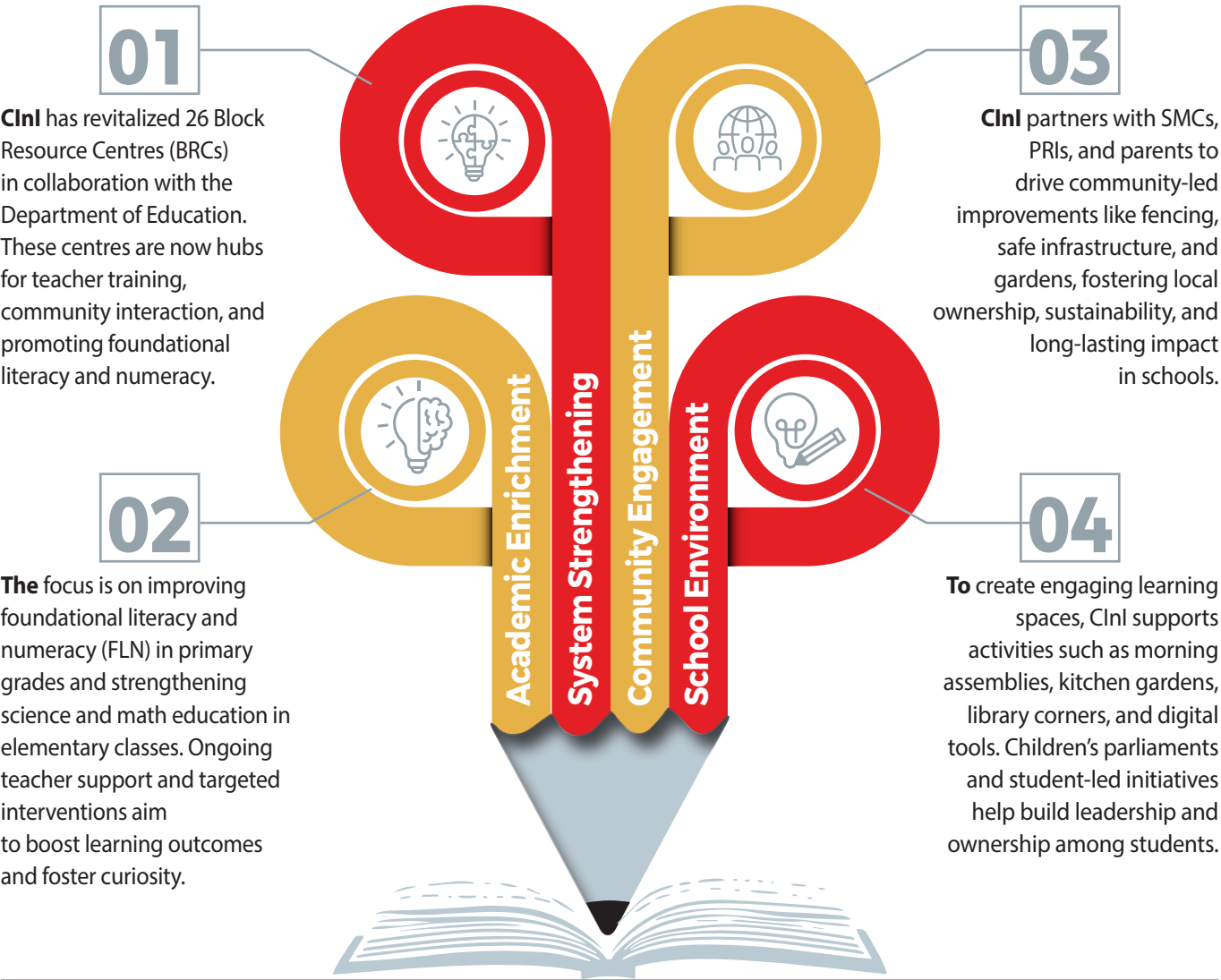


At a Glance

	School (AWC only in Odisha)	Teacher	Children	SMCs
Jharkhand	2,669	3,824	2,34,457	960
Odisha	1,152	1,095	60,430	144
Gujarat	40	100	8,000	40
Total	3,861	5,019	3,02,887	1,144

Empowering Futures Through Education

Now in its second phase (2022–2025), CInI is scaling its successful models to deepen impact. Its comprehensive approach focuses on four key areas:



01 CInI has revitalized 26 Block Resource Centres (BRCs) in collaboration with the Department of Education. These centres are now hubs for teacher training, community interaction, and promoting foundational literacy and numeracy.

02 The focus is on improving foundational literacy and numeracy (FLN) in primary grades and strengthening science and math education in elementary classes. Ongoing teacher support and targeted interventions aim to boost learning outcomes and foster curiosity.

03 CInI partners with SMCs, PRIs, and parents to drive community-led improvements like fencing, safe infrastructure, and gardens, fostering local ownership, sustainability, and long-lasting impact in schools.

04 To create engaging learning spaces, CInI supports activities such as morning assemblies, kitchen gardens, library corners, and digital tools. Children's parliaments and student-led initiatives help build leadership and ownership among students.



GANDHARVA NAG,
HATAMUNIGUDA, RAYAGADA
DISTRICT, ODISHA

From Silence to Support: Threads of Hope, Pages of Joy

A heartwarming story of how a community library rekindled Gandharva's lost love for reading and learning.

Gandharva Nag, a resident of Hata Muniguda, had to leave school after Class 7 due to financial difficulties in a large family of seven children. With no access to books or newspapers, his childhood was spent helping support the family through tailoring. Years later, a quiet transformation began when CInI set up a colourful and inviting community library inside Hata Muniguda. The vibrant space, filled with illustrated picture books and friendly reading corners, attracted many in the community—especially children.

Drawn by curiosity, Gandharva gathered the courage to visit the library. He started picking up simple, visually rich “Big Books” and found himself enjoying the experience. Despite years away from reading, the books felt familiar and comforting.

Reading slowly became part of his daily routine, squeezed in between work commitments.

Now, he visits regularly, always eager to find something new to read. His journey is a powerful example of how inclusive, community-driven spaces can revive lost joys and spark new beginnings—no matter one's age or background.

“
I feel relaxed when I read books. So I pick up any book that attracts me.

Gandharv Nag,
Community Member, Hata
Muniguda, Odisha



Reviving Summer Learning: Gram Shiksha Sangam

A community-driven summer initiative that creates joyful, outdoor learning spaces to spark curiosity and strengthen foundational skills in children.

VILLAGE CHILDREN,
ACROSS DISTRICTS JHARKHAND



In many villages, summer vacation often meant long, idle days for children—away from school, structure, and learning. With classrooms shut and the heat unbearable, academic engagement took a back seat. But things changed with the launch of Gram Shiksha Sangam, a community-led summer learning program introduced by CInI in collaboration with the Education Department.

Instead of classrooms, learning happened in open spaces—turning nature into a nurturing classroom. CInI field coordinators played a key role, visiting households to speak with parents and emphasize their role in shaping their children's future. These conversations sparked interest and participation.

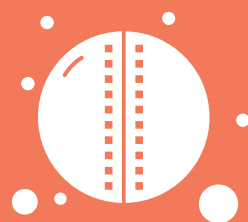
Children immersed themselves in reading sessions, fun math and literacy games, writing practice, and hands-on science activities. A library of books was made available, and reading became



a joyful habit. Parents joined the movement too—helping set reading schedules at home and making learning a shared family experience.

Its success caught the attention of policymakers. At a recent pre-budget state consultation, CInI proposed expanding Gram Shiksha Sangam and setting up community libraries across districts. The Education Department responded with enthusiasm, recognizing its potential to transform summer learning.

Gram Shiksha Sangam is more than a summer program—it's a shining example of how community-rooted, joyful learning can build lasting habits and inspire generations.



SPORTS

From Wooden Stick to National Glory

“

When I first joined the Burju Grassroots Hockey Centre in 2020, I didn't even know how to hold a stick. My mother dreamed I'd follow my father's path in hockey, even though we had nothing. CInI gave me my first wooden stick. Two months later, Ma gifted me a fibre one—it meant everything.

I trained hard, cycling and bussing 15 km daily. Slowly, I became captain—leading my team to win the All-India U-16 Grassroots Tournament. From no gear to 'Player of the Match'—my journey proves dreams do come true.

”

ARPANA TUTI

Burju village, Murhu block, Khunti,
Jharkhand



Nurturing Talent, Building Futures

Empowering tribal youth through grassroots hockey, CInI nurtures talent, builds life skills, and promotes sporting excellence across Jharkhand's heartland.

The grassroots hockey initiative in Khunti, Simdega, and Gumla continued to flourish, nurturing talent and strengthening the sport's foundation. Spread across 90 centers, 1,861 new children received regular training thrice a week, participating in 37,980 structured sessions led by trained coaches. These sessions honed core hockey skills, teamwork, and passion for the game.

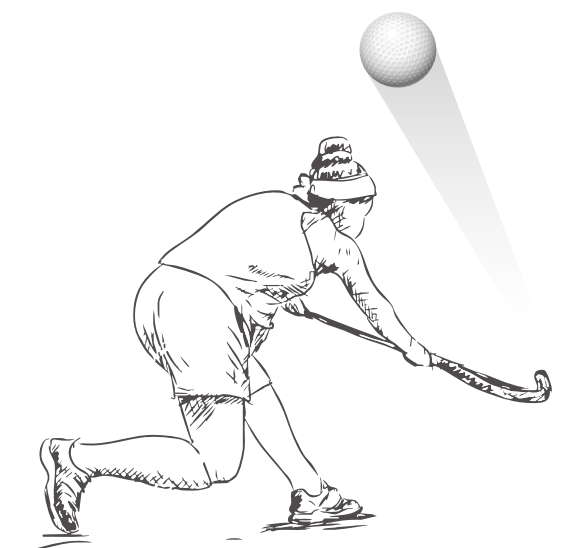
Children gained competitive exposure through three district-level leagues and festivals, culminating in an inter-district league in Khunti. At the Regional

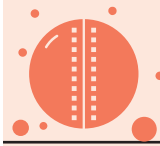
Development Centres (RDCs), 34 promising players underwent 610 high-performance sessions on artificial turf. Their efforts paid off—30 players were selected into elite hockey academies. The RDC Girls' Team won the 2nd All India U-16 Women's Hockey Tournament in Rourkela. RDC teams from Simdega, Khunti, and Gumla also shined in district and Khelo India events, with 20 girls representing Khunti in the Khelo India ASMITA State League, securing third place in both Sub-Junior and Junior categories. Coaches advanced too—seven earned Basic certification, five completed Level 1, and three moved to Level 2.

AT A GLANCE



Beyond sport, the initiative promoted holistic growth. Menstrual Hygiene sessions reached 997 adolescent girls, with 763 adopting safe practices. Life skills training empowered 2,367 children in leadership, discipline, and emotional resilience—1,378 showed visible improvement. The year concluded with sub-junior tournaments that strengthened the talent pipeline. Overall, the initiative made significant strides in fostering hockey excellence and life skills among tribal youth.





SUKUVAN BHENGRA,
PARARIYA VILLAGE,
TORPA BLOCK, JHARKHAND

Where Grief Met Grit:

The Rise of a Young Hockey Star

From deep personal loss to national tournaments—Sukuvan's hockey journey is one of healing and hope.

In the tribal village of Parariya, Torpa block, Sukuvan Bhengra, a young boy with a natural spark for sports, was growing up in a modest household of five siblings. His father balanced farming with daily-wage work, and it was Sukuvan's elder brother who encouraged his love for sports and helped support the family.

At just eight years old, in 2020, Sukuvan joined the Husir Grassroots Hockey Centre under the CInI-supported program. His journey had just begun when tragedy struck—he lost his mother, followed by the sudden death of his elder brother in an accident. Devastated, Sukuvan dropped out of school and left hockey, working alongside his father to support the family.

Amid this darkness, Coach Saban Bhengra stood by him. With patience and belief, the coach convinced Sukuvan and his father to let him return to the game. Starting again, Sukuvan's passion was reignited. His consistent efforts inspired his father, who bought him a fibre stick—a symbol of new beginnings. In 2023, his talent earned him a spot at the RDC Khunti after open trials. There, under Coach Govind Nayak, he refined his skills and began representing in major tournaments like the All India.

In December 2024, Sukuvan was selected for the State Sports Hostel in Khunti, setting him on a path to professional hockey. His story is one of resilience, second chances, and the transformative power of sport.

“I never imagined hockey could do this for my son. CInI gave him a new life and a future.”

Sukuvan's Father



From Village Fields to Victory:

Arpana's Hockey Dream

A tribal girl with a wooden stick turned grit into glory on national hockey grounds.

ARPANA BAGE,
PUJAR TOLI, SIMDEGA DISTRICT, JHARKHAND

In the quiet tribal hamlet of Pujar Toli in Jharkhand's Simdega district, a young girl named Arpana Bage discovered a dream that would transform her life—and inspire many more.

In 2019, as an eight-year-old student at R.C. Middle School, Patiamba, Arpana had never held a hockey stick. That changed when a CInI-supported trainer introduced hockey to her school. Though her family couldn't afford gear, she began her journey with a simple wooden stick from the Patiamba Grassroots Centre.

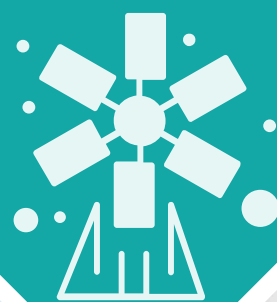
Her raw talent, nurtured by regular practice and encouragement, soon began to shine. In 2022, Arpana's dedication earned her a place at the Regional Development Centre (RDC) in Simdega. There, under the guidance of Coach Suraj Kerketta, she received structured training, proper equipment, and nutrition. Every weekend, she travelled 45–50 km for turf practice—a distance she covered with unwavering commitment.

Her leadership and skills grew stronger. She captained the RDC Simdega team to a 3rd place finish in the district league and later, as vice-captain of the CInI team, led her squad to victory at the 2nd All India U-16 Grassroots Championship in Rourkela—bagging the Player of the Match title in the final.

In 2024, she was selected for the Sports Training Centre (STC) in Bariatu, and by 2025, Arpana had clinched gold at the Jharkhand Asmita League. From a dusty school field to national championships, Arpana's journey is a story of courage, discipline, and the power of opportunity. With every stride she takes on the turf, she's not just playing hockey—she's redefining what young tribal girls can dream of and achieve.

“I never imagined this would be possible. But now, every match takes me one step closer to my dream—to represent India.”

Arpana Bage



RENEWABLE ENERGY

RENEWABLE ENERGY

A Voice That Brought Water Home

“

In Talav, we had pipelines—but no water. Only two houses near the entrance had access. Our neighboring hamlet, Ninama, received regular supply through a solar-powered line. People here were frustrated. As the community leader, I couldn't stay silent. I approached CInI and requested a separate solar pumping system for Talav. With community support, we contributed 15% of the cost; the rest was funded by CInI. Now, every home gets water. We've also committed to monthly maintenance fees. Seeing water finally flow into our homes feels like a dream come true.

”

SUMITRA BEN

Talav hamlet, Padalya village, Gujarat

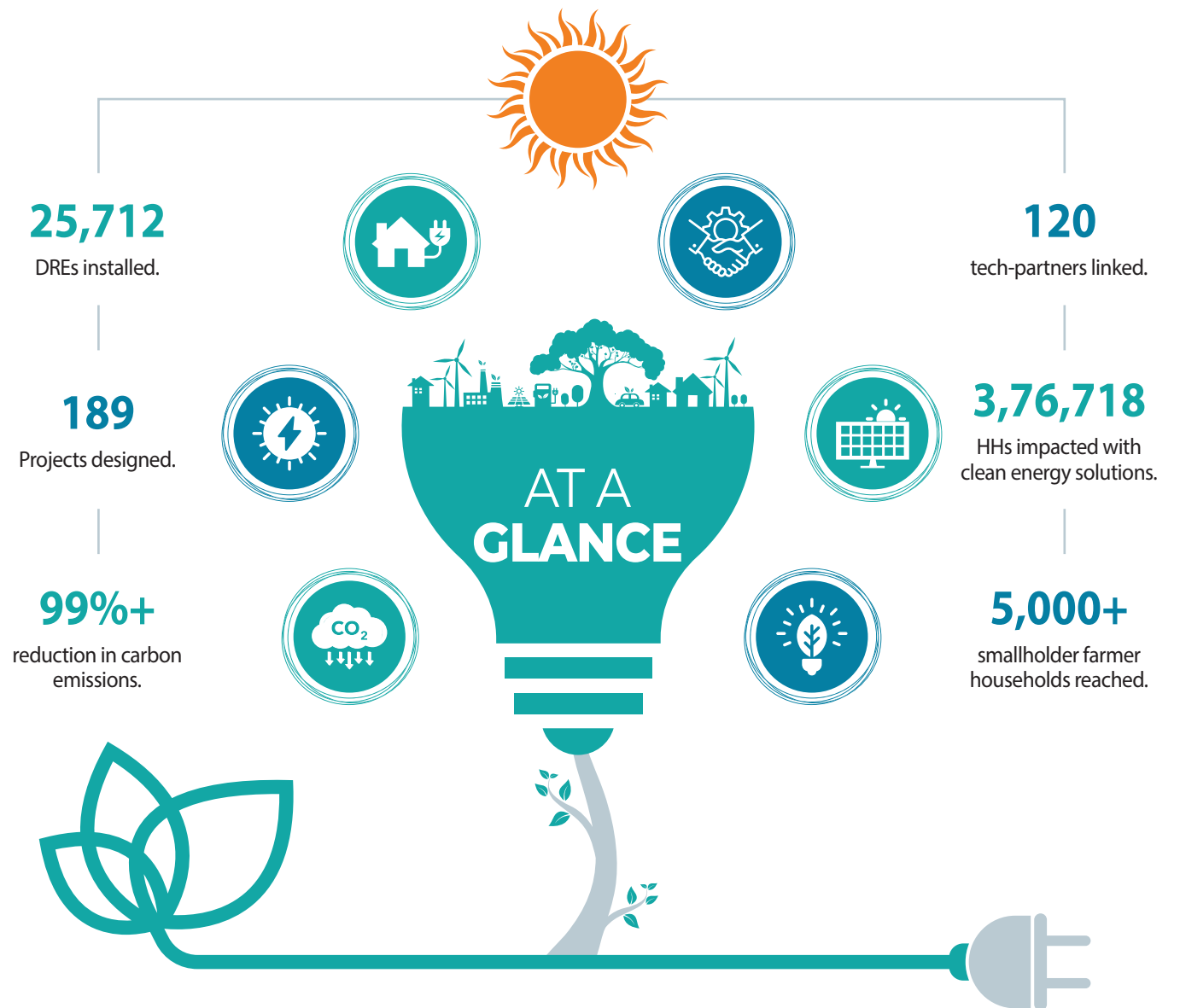


Powering Progress, the Clean Way

Promoting clean and sustainable energy, CInI's initiatives bring solar-powered solutions to enhance livelihoods and reduce carbon footprints in tribal regions.

In many tribal and remote rural areas, regular access to electricity is still a big challenge. Even when villages have water supply systems or irrigation setups, frequent power cuts make them hard to use. This often pushes people—especially women—back into physically demanding tasks like lifting water manually or collecting firewood, taking up time that could be spent on income-generating or meaningful activities.

At CInI, we believe energy is more than just power—it's about giving people the freedom to live with dignity, save time, and improve their quality of life. That's why we focus on climate-friendly, renewable solutions that truly work for rural communities. One of our key efforts is setting up solar-powered systems to ensure steady access to water and electricity, even when the main grid fails. These systems are reliable, easy to maintain locally, and reduce the community's dependence on outside help.



We also support the use of biogas as a clean cooking option. It turns everyday waste into energy, cutting down on smoke in kitchens, saving trees, and reducing the hard work women do to collect firewood. These improved bio-digestors also help in producing high quality bio-slurry which is an excellent input for enhancing the soil health and fixing the carbon content.

CInI enabled four Ayushman Arogya Mandirs in Guna, Madhya Pradesh with solar power, promoting clean energy use in healthcare. The intervention significantly reduced electricity costs, improved equipment upkeep, and enhanced service delivery—leading to a 10% rise in OPD footfall.

For us, renewable energy is a step toward a stronger, greener future—one where rural community lead the way with resilience, pride, and control over their own progress.



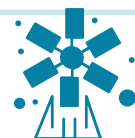


Breaking Taboos, Together:

Solar Insect Traps Are **Helping** Farmers in Dahod

Solar insect traps are helping Dahod farmers cut pesticide use, improve yields, and farm more sustainably—one field at a time.

VEGETABLE AND FRUIT FARMERS,
DAHOD, GUJARAT



In the tribal district of Dahod, Gujarat, vegetable and fruit farmers are witnessing a quiet transformation in their fields—thanks to the use of solar insect traps. These small, solar-powered devices attract and trap harmful pests during the night using light, offering an effective, eco-friendly alternative to chemical pesticides.

Previously, most farmers in this region relied heavily on chemical pesticides, which not only drove up costs but also posed risks to beneficial insects, soil health, and the surrounding environment. These chemicals often entered the groundwater and left residues on crops, affecting both human and ecological health. The introduction of solar insect traps has helped break this dependency and shift farmers toward more sustainable practices.

So far, over 200 solar insect traps have been installed across Dahod, especially in Lift Irrigation command areas. Farmers who use these traps now save ₹2,000–₹3,000 per acre annually on pesticide expenses. More importantly, they are seeing healthier crops, improved productivity, and seasonal income increases of ₹5,000–₹8,000.

These traps require minimal maintenance—just regular cleaning of the solar panel and the trap box. With a durability of 3 to 4 years, they offer long-term economic and environmental benefits. The initiative not only supports cleaner energy use but also helps restore biodiversity in farming ecosystems and prevents overuse of chemical inputs.

By reducing input costs and boosting yields in a climate-friendly way, solar insect traps are proving that even a small intervention can have a big impact on rural livelihoods. This simple tool is now a symbol of how innovation, when aligned with local needs, can drive sustainable agriculture from the ground up.

“Over 200 solar insect traps are installed in Dahod, saving farmers ₹2,000–₹3,000 per acre and increasing seasonal income by ₹5,000–₹8,000.”



Clean Energy, Green Fields:

Water and Wealth **to** Farmers

Solar-powered irrigation is transforming farming in remote areas—boosting incomes, saving water, and making agriculture climate-resilient and sustainable.

FARMER GROUPS
(4-5 MEMBERS PER GROUP),
REMOTE VILLAGES ACROSS GUJARAT,
MAHARASHTRA, JHARKHAND & ODISHA



In remote parts of states like Gujarat, Maharashtra, Jharkhand, and Odisha, water has always been a challenge for smallholder farmers. Many relied on costly diesel pumps or traditional methods that wasted water and harmed the soil. But now, things are changing with the help of solar-powered mini lift irrigation systems.

These systems use clean solar energy to lift water to farmlands, especially in upland and remote areas. When used with drip irrigation and mulch, the system saves water, keeps the soil healthy, and helps grow high-value crops more than once a year. As a result, cropping intensity has increased to at least 150%, and farmers are now earning steady cash incomes—not just grains.

Farmers are selected based on landholding and their interest in using clean energy. Usually, 4 to

“Each solar pump irrigates 6–7 acres of farmland and helps the group earn ₹2.0–2.5 lakh more annually.”

5 farmers form a group to share one solar pump, which irrigates 6–7 acres reliably. Each household earns an extra ₹40,000–₹50,000 annually, and together, a group can earn ₹2.0–2.5 lakh more every year.

This clean and smart farming approach is reducing poverty, cutting down diesel use, improving crop diversity, and making farming more climate friendly. It's a powerful example of how renewable energy is transforming rural livelihoods—one farm at a time.

EVENT GALLERY



SWACCH VIDYALAYA SWASTH VIDYALAYA

On 28th February 2025, a workshop titled "Swachha Vidyalaya – Swastha Vidyalaya: An Integrated Approach in WaSH and Health" was held in Durg, Chhattisgarh. Organized in collaboration with the Departments of Health, Education, and the Swachh Bharat Mission, the event was part of CInI's Integrated Health Program and supported through the CSR efforts of Durg Shivnath Expressway Pvt. Ltd.



THE ANNUAL MELAVA

The Annual Melava 2024–25 at Harankhuri village brought together community members, institutions, and partners to celebrate progress and strengthen collaboration. From cultural performances and inspiring stories to informative stalls and expert sessions, the event showcased collective achievements in livelihoods and health. Highlights included recognition of outstanding farmers and cadres, engaging street plays, and a detailed vision sharing by CInI. The Melava served as a platform for knowledge exchange and reaffirming the community's commitment to inclusive development in Nandurbar district.



TARANG 2024

Tarang 2024, a two-day retreat themed "Oorja: From One Hand to the Other", was held in Puri, Odisha, for Lakshpati Didis from Jharkhand. Celebrating their leadership in women empowerment, the event brought together around 100 participants, including Board members and representatives from seven Farmer Producer Companies (FPCs). The retreat served as a vibrant platform for vision building, knowledge exchange, and recognition of collective achievements.



HOCKEY FESTIVAL

CInI organized a three-day international-level hockey event in Khunti, Jharkhand, with players from Khunti, Gumla, and Simdega districts. The event featured the participation of Olympian Floris Jan Boveland and his team from the Netherlands-based Boveland Foundation. In support of CInI's hockey initiative, the foundation donated 170 hockey sticks and essential gear to inspire and equip young players.



PRATHMIK SWASTHYA SAMPARK KARYAKRAM

On 23rd December 2024, CIMS Chhindwara, in collaboration with the CM&HO Office, organized the Prathmik Swasthya Sampark Karyakram. Faculty, residents, and students engaged with primary healthcare providers. CInI shared its work under the MP Health Systems Strengthening Project, highlighting the development of 600+ Atmanirbhar Ayushman Arogya Mandirs aimed at strengthening rural tribal healthcare through knowledge sharing, supportive handholding, and technology adoption.



EXPERIENCE SHARING EVENT

An Experience Sharing Event for the 2024–25 program interventions under LKP 2.0 was held in March 2025 at Kachla Mandir, located in Dhadela village, Limkheda block, Dahod district, Gujarat. The event saw participation from 10 blocks and 9 federations, bringing together around 250 participants. It served as a platform for mutual learning, reflection, and strengthening future efforts.

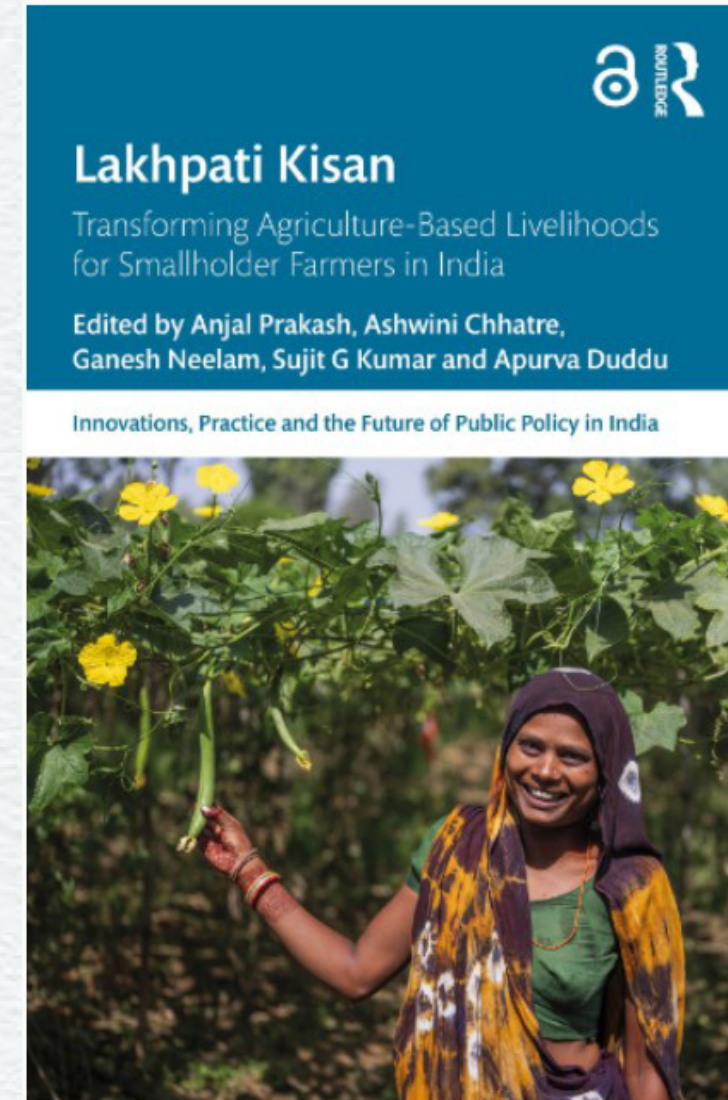
AWARDS & RECOGNITION



Sukanti Naik from Kaliapal Damsahi, Keonjhar, was honoured with the Janjati Krushak Samman by Odisha's Chief Minister under the Mukhyamantri Janajati Jeevika Mission in January 2025.



AWARDS & RECOGNITION



CInI is proud to share Lakhpati Kisan, a book initiated by Bharti Institute of Public Policy, Indian School of Business (ISB), Hyderabad. It captures our journey of empowering tribal farmers through sustainable agriculture and livelihood interventions across four central Indian states.



FINANCIAL STATEMENTS

FINANCIAL STATEMENTS

COLLECTIVES FOR INTEGRATED LIVELIHOOD INITIATIVES				
BALANCE SHEET AS AT 31 MARCH, 2025			Registration No. : S/58648/2007	
(Amount in Rs. Lakhs)				
S. No.	Particulars	Note No.	As at 31 March, 2025	As at 31 March, 2024
I	FUNDS AND LIABILITIES			
1	Member's Funds			
(a)	Corpus Funds	3	285.47	283.39
(b)	Reserves & Surplus	4	43.17	36.04
			328.64	319.43
2	Non-current liabilities			
(a)	Other long-term liabilities	5	144.83	132.49
			144.83	132.49
3	Current liabilities			
(a)	Other current liabilities	6	3,673.70	6,372.21
			3,673.70	6,372.21
	TOTAL		4,147.17	6,824.13
II	ASSETS			
1	Non-Current assets			
(a)	Property, Plant and Equipment	7	145.52	133.48
(b)	Long Term Loans & Advances	8	5.00	3.77
			150.52	137.25
2	Current assets			
(a)	Short Term Loans and Advances	9	5.98	67.71
(b)	Cash & bank balances	10	3,990.67	6,619.17
			3,996.65	6,686.88
	TOTAL		4,147.17	6,824.13
Brief about the entity		1		
Summary of significant accounting policies		2		
The accompanying notes are an integral part of the financial statements		1-22		
In terms of our report attached.				
For Deloitte Haskins & Sells LLP Chartered Accountants (Firm Regn No. 117366W/W-100018)			For and on behalf of the COLLECTIVES FOR INTEGRATED LIVELIHOOD INITIATIVES	
JAYESH MANILAL PARMAR Digitally signed by JAYESH MANILAL PARMAR Date: 2025.08.30 16:39:26 +05'30'			MANOJ KUMAR Digitally signed by MANOJ KUMAR Date: 2025.08.30 14:43:55 +05'30'	
Jayesh Parmar Partner (Membership No. 106388)			Manoj Kumar President	
Place : Mumbai Date : 30 August, 2025			Place : Bangalore Date : 30 August, 2025	
			GANESH SATISH NEELAM Digitally signed by GANESH SATISH NEELAM Date: 2025.08.30 14:12:51 +05'30'	
			Ganesh Neelam Member Place : Pune Date : 30 August, 2025	

COLLECTIVES FOR INTEGRATED LIVELIHOOD INITIATIVES				
STATEMENT OF INCOME AND EXPENDITURE ACCOUNT FOR THE YEAR ENDED 31 MARCH, 2025			Registration No. : S/58648/2007	
(Amount in Rs. Lakhs)				
S. No.	Particulars	Note No.	For the year ended 31 March, 2025	For the year ended 31 March, 2024
I	Grants and Donation	11	12,297.23	11,632.38
II	Other income	12	17.18	9.26
	Total Income		12,314.41	11,641.64
III	Expenses:			
(a)	Grant Payments	13	1,574.26	1,764.74
(b)	Project Expenses	14	10,336.29	9,499.30
(c)	Employee benefit Expenses	15	267.83	242.11
(d)	Depreciation Expenses	7	46.22	39.37
(e)	Establishment Expenses	16	82.68	82.24
	Total Expenses		12,307.28	11,627.76
IV	Excess of Income over Expenditure		7.13	13.88
The accompanying notes are an integral part of the financial statements		1-22		
In terms of our report attached.				
For Deloitte Haskins & Sells LLP Chartered Accountants (Firm Regn No. 117366W/W-100018)		For and on behalf of the COLLECTIVES FOR INTEGRATED LIVELIHOOD INITIATIVES		
JAYESH MANILAL PARMAR Digitally signed by JAYESH MANILAL PARMAR Date: 2025.08.30 16:40:05 +05'30'		MANOJ KUMAR Digitally signed by MANOJ KUMAR Date: 2025.08.30 14:45:01 +05'30'		
Jayesh Parmar Partner (Membership No. 106388)		Manoj Kumar President		
Place : Mumbai Date : 30 August, 2025		Place : Bangalore Date : 30 August, 2025		
		GANESH SATISH NEELAM Digitally signed by GANESH SATISH NEELAM Date: 2025.08.30 14:13:34 +05'30'		
		Ganesh Neelam Member Place : Pune Date : 30 August, 2025		



COLLECTIVES FOR INTEGRATED LIVELIHOOD INITIATIVES					Registration No. : S/58648/2007	
RECEIPT AND PAYMENT ACCOUNT FOR THE YEAR ENDED 31 MARCH, 2025					(Amount in Rs. Lakhs)	
For the year ended 31 March, 2024	Receipts	For the year ended 31 March, 2025	For the year ended 31 March, 2024	Payments	For the year ended 31 March, 2025	
	Opening Balance B/f					
1,829.49	Bank Balance	1,380.43	1,764.74	Grant paid		1,574.26
4,683.04	Fixed deposits	5,238.74	9,474.72	Project Expenditures		10,298.52
11,486.08	Grant received	9,435.27	236.43	Employee Benefit expenses		261.57
37.68	Refund received from Onward Grantees	5.80	82.24	Establishment expenses		82.68
259.89	Interest earned on Grants	225.71	0.30	Security Deposit paid		0.49
23.16	Interest earned on other than grants	6.62	57.19	Grant returned		55.52
4.37	Miscellaneous Income	12.54	0.01	Transfer to General Income		-
0.29	Online Donations	0.10	64.28	Fixed assets purchased		60.71
21.41	Advance to Vendors	62.25	-	Payment of other liability-Gratuity Claim		21.31
0.35	Fixed assets Written off	27.36	53.36	Gratuity premium paid		43.74
-	Gratuity Claim received from LIC	21.31	0.50	ESIC Paid		0.50
8.25	Tax deducted at source refund received	-	-	TDS Assets		1.25
			0.71	Other Liabilities paid		-
			0.36	Fixed assets Written Off		24.91
				Closing Balance C/f		
				Bank Balance		1,264.67
				Fixed deposits		2,726.00
18,354.01	Total	16,416.13	18,354.01	Total		16,416.13
<div>For and on behalf of the COLLECTIVES FOR INTEGRATED LIVELIHOOD INITIATIVES MANOJ KUMAR Manoj Kumar President Place : Bangalore Date : 30 August, 2025</div> <div>Digitally signed by MANOJ KUMAR Date: 2025.08.30 14:46:04 +05'30'</div> <div>Digitally signed by GANESH SATISH NEELAM Date: 2025.08.30 14:14:10 +05'30'</div> <div>Ganesh Neelam Member Place : Pune Date : 30 August, 2025</div>						

Learnings & Challenges

Over the years, CInI has expanded its reach across the Central Indian tribal belt, scaling up thematic interventions while ensuring meaningful and sustained engagement with communities. This progress has been possible due to a committed team and a strong emphasis on understanding local contexts and documenting learnings for broader impact.

In livelihoods, we've seen that introducing multiple income-generating options—like livestock, horticulture, and micro-enterprises—helps families build resilience and move toward becoming Lakhpati households. Our focus by 2030 is to ensure wider adoption of this layered approach. Women's empowerment remains central, with consistent efforts to strengthen their leadership and participation across grassroots institutions like FPOs and Federations. Additionally, encouraging smart cropping choices—high-value, short-duration crops—is enabling farmers to earn more using less land and time.

Climate-related challenges continue to affect poor and marginalized communities. To mitigate risks, we promote insurance for capital-intensive assets like livestock and solar pumps, though greater awareness is needed to increase uptake and access. Many households now benefit from Decentralized Renewable Energy-based assets, and we are working to ensure their optimal use through stronger production systems and diversification of power usage.

In water management, we've learned that sustainability is as important as access. Our approach now includes water budgeting, conservation planning, and community-led efforts. Setting up Water Committees for the maintenance of drinking water sources has significantly improved community ownership and behaviour around water use.

In education, our Gram Shiksha Sangam initiative is helping children stay engaged during summers through village-level learning sessions. This has not only improved learning continuity but is also fostering a reading culture—especially in Odisha, where 'Jhola libraries' are gaining momentum. Our grassroots hockey program is also making steady progress, building confidence and offering new opportunities to rural children.

Systems strengthening efforts across core themes—particularly in health and education—often face inherent challenges related to program visibility and prioritization, largely due to frequent shifts in leadership and focus areas. We have addressed these challenges by strategically aligning our interventions with established systemic frameworks. This approach has facilitated stronger adoption of best practices and helped deepen impact at scale. In parallel, we remain committed to continuously building the capacity of our teams throughout the journey.

Our Partners

FOUNDING & STRATEGIC PARTNER

- Tata Trusts

CSR & FINANCIAL PARTNERS

- Apollo Tyre Foundation
- Ashden
- Axis Bank Foundation
- Boehringer Ingelheim
- Bovelander Foundation
- Council of Philanthropies For Climate Action
- Crypto Relief
- Durg Shivnath Expressway Private Limited
- Ernst & Young Foundation
- FISE
- FREN
- HDFC Bank Ltd.
- IKEA Foundation
- Indus Towers Limited
- Infosys Foundation
- International Water Management Institute
- Indian Oil Corporation Limited
- Learning Equality
- Oil and Natural Gas Corporation (ONGC) Foundation
- RIST, The Hans Foundation
- Shell Energy India Pvt Ltd
- Sisecam Flat Glass India Pvt. Ltd.
- STT Global Data Centers India Pvt. Ltd.
- Tata AIG general Insurance Co.
- Tata Asset Management Ltd.
- Tata Communication Ltd.
- TKM India
- MUFG Bank Ltd
- National Dairy Development Board (NDDB)
- Nunhems India Pvt Ltd
- Kotak Mahindra Bank Ltd
- D'Mart Foundation
- IBISA
- TRENT LIMITED

IMPLEMENTATION PARTNERS

- Coastal Salinity Prevention Cell (CSPC)
- Nav Bharat Jagriti Kendra (NBJK)
- Network for Enterprise Enhancement and (NEEDS)
- NM Sadguru Water and Development Foundation
- PRAVAH
- Rural Development Association (RDA)
- Sanjeevani Institute for Empowerment & Development (SIED)
- Society for Upliftment of People with People's Organisation & Rural Technology (SUPPORT)
- Tagore Society for Rural Development (TSRD)
- Vikram Sarabhai Centre for Development Interaction (VIKSAT)
- Farmer Producer Companies (FPCs)
- Sikshasandhan

GOVERNMENT PARTNERS

- District Mineral Foundation (DMF) Keonjhar
- Govt. of Gujarat
- Govt. of Jharkhand
- Govt. of Maharashtra
- Govt. of Madhya Pradesh

- Govt. of Chhattisgarh
- Govt. of Odisha
- National Bank for Agriculture and Rural Development (NABARD)
- National Health Mission (NHM)

INNOVATION PARTNERS

- Khety
- KriSHE
- SELCO Foundation
- Social Alpha
- Sustain Plus

KNOWLEDGE PARTNERS

- Agriculture Research Station - College of Agriculture Dhule
- AbacusBio; Nimbkar Agricultural Research Institute (NARI)
- Anand Agricultural University
- Avanti Finance
- CIMMYT - The International Maize and Wheat Improvement Center
- Civil Society Academy
- Centre for Learning Resources, Pune
- Centre of Gravity
- Central Goat Prosperity Services
- CIBT Education Services, Hyderabad
- Cotton Research Station, Talod
- CropIn Technology Solutions
- Department of Animal Husbandry
- Dept. of Horticulture, Keonjhar
- DESTA - Developing Ecosystems for Systemic Transformation and Adaptation
- District Mineral Foundation, Keonjhar
- Expressive Life
- Indian Council of Agricultural Research (ICAR)
- Indian Institute of Agricultural Biotechnology (IIAB)
- INRG
- India Natural Resource Economics and Management Foundation (INREM Foundation)
- Indian Agricultural Research Institute (IARI)
- International Crops Research Institute for the Semi-Arid Tropics (ICRISAT), Hyderabad
- Indian Institute of Natural Resins And Gums (IINRG) Jharkhand
- Indian Institute of Spices Research (IISR)
- Indian Institute of Technology (IIT), Kanpur
- Indian School of Business (ISB), Hyderabad
- Indian Veterinary Research Institute (IVRI)
- Krishi Vigyan Kendra (KVK) - Dahod, Khedbrahma, Nandurbar
- Maize Research Station, Godhra
- Mahatma Phule Krishi Vidyapeeth (MPKV), Rahuri
- Maharashtra Goat and Sheep Research and Development Institute
- Microware Computing & Consulting Pvt. Ltd.
- Odisha Rural Development And Marketing Society (ORMAS) Keonjhar
- Sabar Dairy & Banas Dairy
- Sardar Krushi University, Dantiwada. Banaskantha
- Samunnati Financial Intermediation and Services Pvt. Ltd.
- S. P. Jain Institute of Management and Research, Mumbai
- Thoughtshop Foundation
- Vriddhi Rural Prosperity Services
- World Veg Organisation
- Institutional partner: Naval Tata Hockey Academy (NTHA), Jamshedpur

EMPOWERED WOMEN

CLICK HERE

JAL JEEWAN MISSION

CLICK HERE



LIBRARY INITIATIVES

CLICK HERE

EQUITABLE HEALTHCARE

CLICK HERE



HEAD OFFICE INDIA

E-620 East Layout, Near Bortalla, Durga Puja Maidan, Sonari,
Jamshedpur - 831011 Jharkhand Tel: 0657-2319 259


REGISTERED OFFICE INDIA


3, Community Shopping Centre, Niti Bagh, Andrewsganj
S.O., New Delhi - 110 049

www.cinicell.org

Email: info@cinicell.org

@cinicell  

@cini_cell 

@cini-collectives 

@linkedin.com/in/cinicell 