



## Improving Livelihoods of the tribal Farmers

in Selected Villages of Dahod  
district of Gujarat









**Improving Livelihoods of the tribal Farmers**  
**in Selected Villages of Dahod district of Gujarat**









# Foreword

Embark on a transformative journey with our project as we cultivate diverse livelihoods, embrace climate-smart agriculture, and create flourishing irrigated command areas. Discover the empowering stories of women-led community institutions, the strength of community bonds through backward and forward linkages, and the entrepreneurial spirit driving interventions to bridge value chain gaps. **Delve into the heart-warming narratives of small**

**and marginal farmers achieving financial milestones, making their households "Lakhpati,"** and witness the colorful tapestry of sustainable agriculture unfolding in our coffee table book. The book encapsulated this journey, where resilience, innovation, and community empowerment converge to redefine the narrative of rural prosperity.











# Acknowledgement

The creation of this coffee table book, highlighting the inspiring stories of rural farmers in the project geography has been a journey filled with learning, inspiration, and collaboration. We extend our heartfelt gratitude to everyone who has contributed to this project and made it possible.

First and foremost, we would like to express our deepest appreciation to the farmers who shared their stories with us. Your resilience, determination, and commitment to sustainable agriculture have not only transformed your own lives but also serve as a source of inspiration for others.

We are grateful to the organizations, such as ST Telemedia Global Data Centres India (STT GDC India), N.M.Sadguru Water & Development Foundation (NMSWDF), and Horticulture Federation Limkheda; whose innovative support have empowered farmers to enhance their livelihoods. Your dedication to rural development and sustainable agriculture is commendable.

Special thanks to the mentors and trainers who have worked tirelessly to impart knowledge and skills to the farmers. Your guidance and support have been instrumental in their success.

We would also like to thank the local communities and Self-Help Groups (SHGs) for their collaboration and support. Your involvement has been crucial in creating a conducive environment for agricultural innovation and growth.

To the readers of this book, we hope that these stories inspire you as much as they have inspired us. May they serve as a reminder of the potential for positive change in rural communities through sustainable agriculture initiatives.

Last but not least, we would like to acknowledge the efforts of all the individuals, organizations, and institutions who have contributed to this project in various ways. Your support and commitment to rural development are deeply appreciated.

**Thank you all for being a part of this journey towards a more sustainable and prosperous future for rural India.**







# From the Desk of Leaders



**Ganesh Neelam,**  
**Executive Director - Collectives For**  
**Integrated Livelihood Initiatives (CInI)**

The Lakhpati Kisan programme is an aspirational programme for our communities, especially the women members. Through the focused approach of empowering the women and engaging them in the agriculture and allied livelihood layering, we are facilitating them meet their aspirations in an irreversible manner. The opportunity towards integrating the value chain approach through the women collectives enables having quality services and products within the Lakhpati Kisan programme. We sincerely thank our partners, especially the donors to believe in the approach and support systematically over the years.





# From the Desk of Leaders



**Bimal Khandelwal,**  
**Chief Financial Officer - STT GDC, India**

The successful transformation of the livelihoods of the small and marginal farmers in the tribal district of Dahod, Gujarat stands as a testament to the collaborative synergy between **STT GDC India** and CInI. This joint endeavor under the Lakhpati Kisan Program, sought to establish sustainable social goals and income generation to uplift the lives of small and marginal farmers in underserved areas, contributing to the greater good of society. This sustained commitment reflects **STT GDC India's** dedication to making a meaningful and lasting impact on rural communities, fostering sustainable development, and improving the overall well-being of those in need. The impact of **STT GDC India's** efforts extends beyond mere economic metrics. By empowering rural communities and enhancing their capacity for self-sufficiency, the organization contributes to the larger narrative of social progress.

Recognizing the pivotal role of agriculture in the lives of a vast majority of the population and the persistent issues of low income, water scarcity, and limited access to resources, the Lakhpati Kisan program was conceived as a transformative intervention aimed at improving the livelihoods and income generation of rural farmers. Through meticulous planning, leveraging local expertise, and displaying unwavering dedication, the Lakhpati Kisan initiative has impacted over 1600 households across 24 villages in Gujarat, lifting them out of poverty - sustainably and irreversibly. This achievement underscores the profound impact possible when organizations join forces with a shared vision. It highlights the pivotal role that alliances play in fostering sustainable development and empowering grassroots communities. Together, we are charting a course toward a brighter future for all.





# From the Desk of Leaders



**Sujit Kumar Gopinathan,**  
**Team Leader, CInI – Gujarat**

Lakhpati Kisan Program, a flagship initiative of CInI, aims to leverage the collective engagement of the community and other stakeholders to sustainably impact the lives and livelihoods of the small and marginal farmers in the central India Tribal region. The current partnership between CInI and STT GDC is a testimony to the meaningful impact on the income earning capacities of the engaged households in the cluster of villages of Dahod district in Gujarat, wherein an intensive engagement with the small holder farmers through layering of various livelihood interventions has helped to transform the agriculture based livelihoods of the small holder farmers. This has helped them to add an additional annual income of 80K-90K and helping them to achieve the aspirational goal of being a Lakhpati kisan. The critical financial support from STT GDC has been a catalyst to the whole process and we would like to express our gratitude for the same and look forward to the continued partnerships for further expansion and outreach to a larger number of women farmers in the region.









# Introduction

## Brief overview of the project

In 2021, 43.96 per cent of the total workforce in India were employed in the agriculture sector. With one of the highest agrarian economies in the world, **India in itself account for 84 per cent of women who depend on agriculture for their livelihood**. While their contribution to the economy is very little known. The involvement of women in agriculture depends on a number of factors such as the type of activity, socioeconomic status of the family, the particular geographical area, and whether the agricultural production is of cash crop or sustenance. Farm women contribute significantly to family income, but their role is restricted to that of a farm labourer. Female farmers face challenges in accessing quality agricultural inputs, lacks guidance with relevant knowledge on newer techniques and methods. In addition, women farmers' agency as a decision making authority in the agriculture space has a limited role- unable to participate in commercial activities in the entire process.

To address the challenges and bridge the gap, STT Global Data Centres (STT GDC) India Private Limited in collaboration with Collectives for Integrated Livelihood Initiatives (CINI) since 2019 is working with female farmers from the 'Bhil' tribe, Gujarat to empower them socially and economically through agriculture-based livelihood interventions. Primarily addressing the Sustainable Development Goal (SDG) like, **SDG 1 - No Poverty, SDG 2- Zero Hunger, SDG 3 - Good Health and Well Being, SDG 5 - Gender Equality, SDG 7 - Affordable and Clean Energy, SDG 13 - Climate Action and SDG 17 Partnerships for the Goals**, the program 'Lakhpati Kisan' aims to enhance their social and economic well-being by implementing interventions that focus on livelihoods rooted in agriculture.

## Impact it aims to achieve

The project aims to bolster the resilience and financial stability of 1,600 tribal farmer households across 24 villages by introducing at least two diverse livelihood prototypes. These farmers will play an active and integral role in the development of the agriculture value chain, contributing to an inclusive and sustainable value chain ecosystem.







# Project Overview

## Highlights of the project's background

The captivating narrative of CInI 'Lakhpati Kisan Program,' is a living testament to their decade-long presence in the region since 2007. What began as a noble pursuit to ensure food security and nutrition for small and marginalized farmers evolved into a remarkable journey. Initiated with a singular focus on maize cultivation, a vital staple for the tribal population, the organization's interventions transformed farmers' yields from 1.5-2 quintals to an impressive 6-7 quintals in the kharif season and 11-13 quintals in the rabi season through crop demonstrations and quality inputs.

The farmers' experiential journey led to a flourishing landscape of diversified agriculture, cultivating 22 crops year-round by 2014. In 2015, CInI Cell's 'Lakhpati Kisan' embarked on a 5-year mission, integrating approaches to enhance farmers' annual income. Embracing a utilitarian mindset and drawing insights from stakeholders, including partner organizations, community-based entities, and farmers, the mission aimed to establish a sustained income of INR 1,50,000 per annum by diversifying revenue streams.





## Objective

The objective of the **'Lakhpati Kisan'** program is to transform the livelihoods of the tribal female farmers and help them enhance their income earning capacities

## The community the project serves

The project primarily serves the Bhil tribe, comprising **47.8% of the total tribal population in Gujarat, India.**



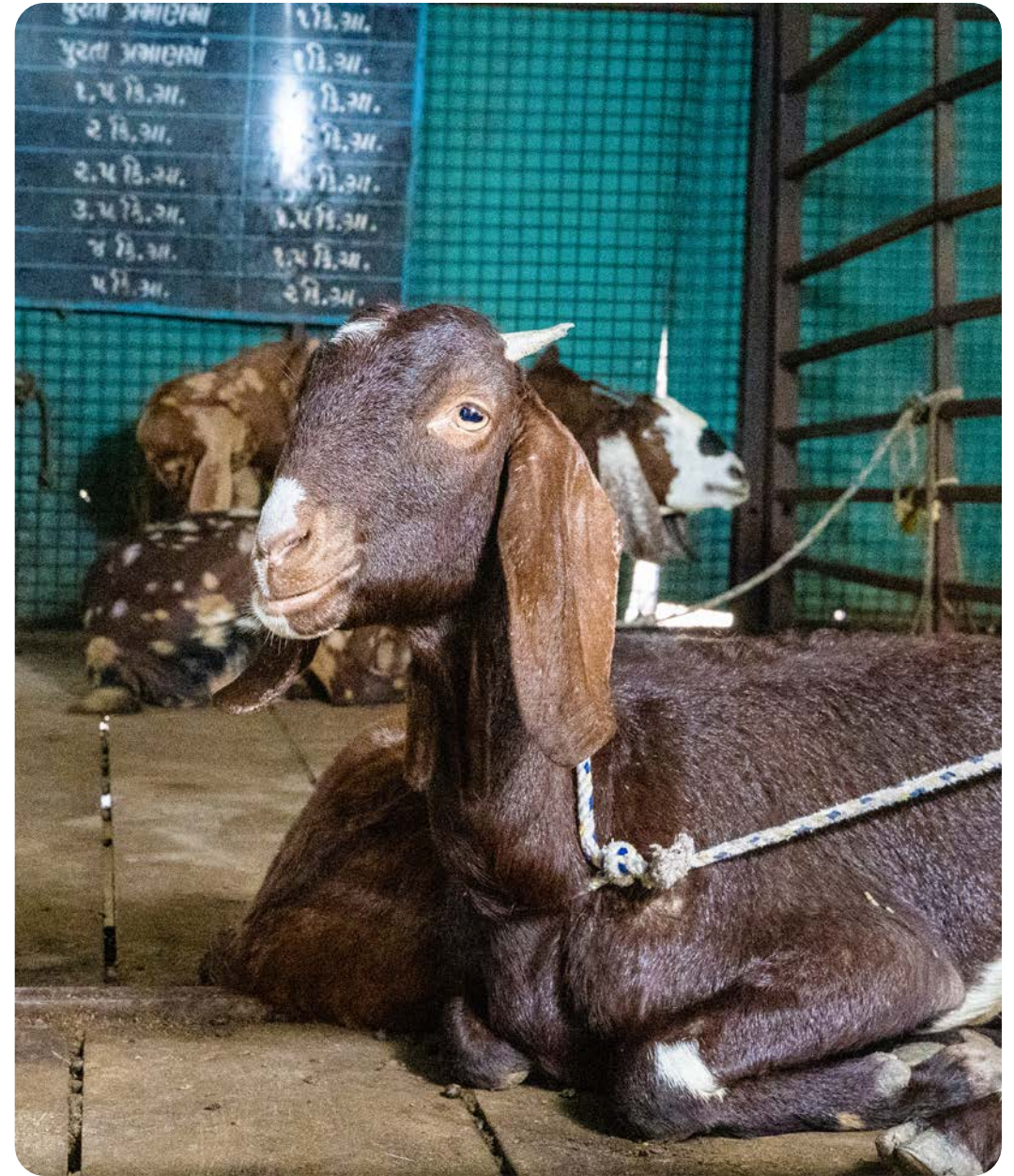


## Key statistics and achievements that illuminate the transformative impact of the program

Noteworthy is the substantial increase in income, a testament to the program's focus on small landholders with less than 2 acres of land. The farmers have ingeniously optimized their land, dedicating one-fourth to one-eighth for year-round vegetable cultivation, resulting in heightened productivity. The provision of quality inputs through the federation, coupled with comprehensive training on crop-specific practices, has contributed significantly to a **15-20% reduction** in production costs.







A staggering 94% of farmers have delved into livestock rearing, heralding an additional revenue stream. **In the fiscal year 2022, 24% of farmers have already earned ₹12,085 per annum from goat farming and ₹42,866 per annum from milk production.** The intervention has empowered farmers with enhanced knowledge on livestock care, ensuring timely vaccinations, appropriate medication, and regular check-ups.



Central to the program's success are community-based organizations (CBOs) like self-help groups and the apex federation, serving as frontline champions in executing the project plan. These CBOs have evolved into key stakeholders, nurturing a micro-ecosystem that equips farmers with essential knowledge and access to high-quality agricultural inputs.





Exploring forward market linkages, farmers can choose to sell their produce through the 'Agriculture Produce Market Committee' (APMC), facilitated by the federation. However, a noteworthy entrepreneurial twist reveals that the majority of farmers engage in a direct-to-consumer (B2C) business model, showcasing their entrepreneurial flair. They target weekly haats or venture to Vadodara and Ahmedabad, unlocking markets beyond village mandis and augmenting their livelihood income.

This multifaceted success story unfolds as a testament to the program's profound impact on empowering farmers to explore and thrive in diverse markets.

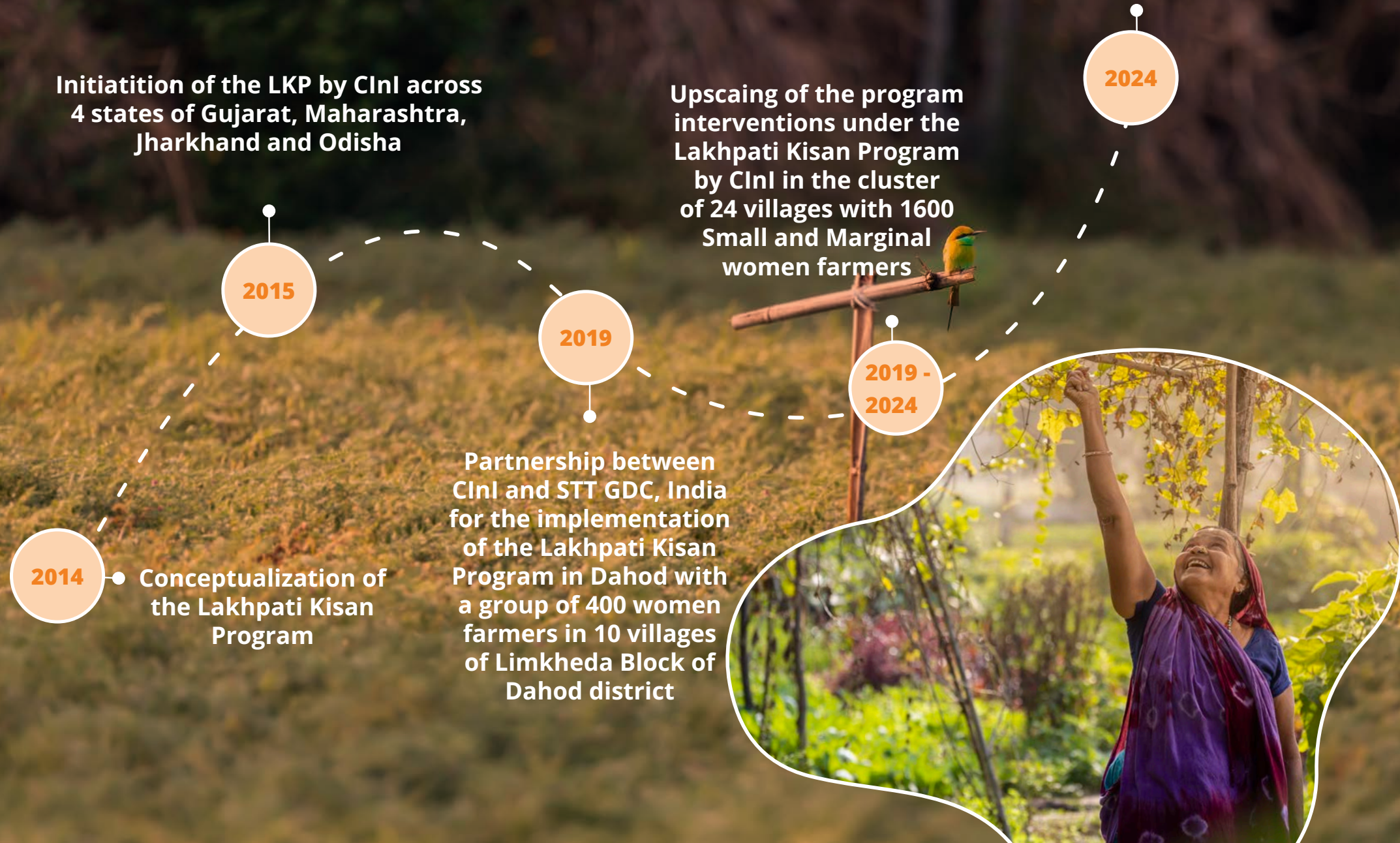




# Project Timeline

Journey of the Lakhpati Kisan Program

> 85% of the intervened HHs cross the threshold of earning One lac Plus annual income through the various program interventions







# Innovations

**Trellis Vegetable:** The introduction of trellis vegetable cultivation has proven transformative for farmers, optimizing land use and diversifying revenue streams. By vertically growing vegetables, farmers not only enhance productivity in limited spaces but also benefit from increased yields enabling year-round production of nutritious crops, contributing significantly to their income and overall agricultural sustainability. The farming techniques provides an eco-friendly solution, reducing the need for excessive land and promoting sustainable agricultural practices within the program

**Trellis Vegetable in 0.125 Acres** of Land- Provide two-tier high-value agriculture opportunity and **income of average Rs. 40,000/-**





**Livestock development through Hydroponics Fodder:** Harnessing the innovative technique of hydroponics fodder cultivation, our farmers have experience increased livestock productivity through a consistent and nutritious feed source, contributing to the overall income upliftment. By cultivating year round nutrient-rich fodder through hydroponics, farmers have experienced a remarkable increase in livestock productivity, contributing to an additional revenue stream fostering resilience in the face of changing environmental conditions. The innovation exemplifies the program's commitment to sustainable and efficient farming practices, resulting in improved overall farm yields.



**Floriculture:** Seasonal Floriculture **Interventions in an average land size of 0.125 Acres** of land which gives them an average **income opportunity of average Rs. 20,000- Rs. 40,000.**

**Poly Tunnel Nursery:** The introduction of poly tunnel nurseries has proven instrumental in empowering farmers by providing a controlled environment for seedling cultivation, ensuring a consistent and healthy supply of plants. This innovative approach has not only enhanced crop diversity but also strengthened farmers' resilience, enabling them to cultivate a wide range of crops with increased efficiency and success in our transformative agricultural program.

**Poly Tunnel Nursery in 1.5 guntha** of land supports quality seedlings of a desired variety of vegetables across the season runs by women entrepreneurs in Jekot village and have sold **Sold more than 1 lakh seedlings in a year.**

**Drip cum Mulch Interventions:** The incorporation of Drip cum Mulch Interventions has empowered farmers by optimizing water usage, enhancing soil health, and significantly increasing crop yields, thereby fostering sustainable and resilient agriculture practices.







# Impact Assessment

*Presentation of quantitative and qualitative data showcasing the positive impact of the project on the community, individuals, and the environment*

Increased awareness on livestock rearing

Improvement in quality fodder cultivation- Farmers cultivate fodder in 0.12 to 0.5 acres of land which gives them approximately 350 kg to 450 kg yield.

As part of diversifying farmers' revenue stream, 93% of the farmers have started investing in allied agriculture activities especially in livestock breeding.

59% households earned revenue from the sale of produce during summer seasons and 23% households had additional earning from livestock especially goat and cattle. The increase in income is also a result of the quality agri-input provided by the program which according to the implementation team has reduced the cost of production by 15-20%.

Reduce in traditional cropping practices, and adoption of best practices such as mulching and crop geometry

94% farmers have started cultivation for all three seasons which is a key contributor in their income using scientific and relevant agricultural practices

The visible change in increase in income of average farmers by INR 1,81,000 per annum by 2022

The intervention has resulted the villages in having irrigation facilities providing constant availability of water for cultivation.

Smallholder farmers now cultivate their land all-round the year.











## Success stories and Testimonials

### Lelaben Vijaybhai

Lelaben Vijaybhai's journey from traditional farming to successful vegetable cultivation in Dabhada, Usara, is a testament to the transformative power of sustainable agriculture initiatives. One of the key aspects of her transformation was the establishment of a high-tech nursery, which had a significant impact on her family's income and overall livelihood.

The high-tech nursery introduced through the Lakhpati Kisaan Program played a crucial role in diversifying Lelaben's agricultural activities. It enabled her to grow healthy and robust seedlings of various high-value crops, including vegetables and fruits. This diversification not only increased the family's income but also provided them with a steady and reliable source of revenue throughout the year.

The nursery also allowed Lelaben to become a supplier of quality seedlings to other farmers in the region, further enhancing her income and status within the community. This additional revenue stream proved to be a game-changer for her family, lifting them out of subsistence farming and into a more financially stable and prosperous position.

Moreover, the high-tech nursery demonstrated the potential of leveraging technology and modern farming practices in rural areas. By embracing innovative techniques and tools, Lelaben was able to significantly improve her crop yields and overall productivity. This success story has not only inspired other farmers in Usara but has also become a model for sustainable agriculture practices in neighboring villages.

The establishment of a high-tech nursery has been a pivotal aspect of Lelaben's agricultural evolution. It has not only contributed to her family's financial well-being but has also served as a catalyst for positive change in her community. Lelaben's story lays the importance of innovation and diversification in agriculture and serves as an inspiration for farmers looking to enhance their livelihoods through sustainable practices.

***“The high-tech nursery introduced through the Lakhpati Kisaan Program has been a game-changer for me, significantly increasing my family's income and providing a steady revenue source throughout the year.”***







## Radhaben

Radhaben's success story in Kirkhai is particularly notable for her pioneering efforts in strawberry farming, which significantly contributed to her increased income and improved living standards. Initially facing challenges such as water scarcity and reliance on costly machinery, Radhaben's participation in the Lakhpati Kisaan Program proved transformative.

One of the key aspects of Radhaben's success was her adoption of strawberry farming, a high-value crop known for its lucrative returns. By diversifying her crop portfolio and venturing into strawberry cultivation, Radhaben was able to capitalize on market demand and command higher prices for her produce. This shift not only increased her income but also reduced her reliance on traditional crops, thereby mitigating the risks associated with mono-cropping.

Additionally, Radhaben's embrace of sustainable practices, including the adoption of solar power, played a crucial role in her agricultural evolution. The use of solar power helped reduce operational costs and dependence on expensive machinery, further enhancing the profitability of her farming operations.

Radhaben's success underscores the importance of innovation and diversification in agriculture. Her journey serves as an inspiration for rural farmers, demonstrating how strategic investments in high-value crops and sustainable practices can lead to significant improvements in income and quality of life. Radhaben's story is a testament to the transformative impact of modern agricultural programs and the potential for sustainable farming to drive rural development and prosperity.

***"Embracing strawberry farming through the Lakhpati Kisaan Program has transformed my life, significantly boosting my income and allowing me to improve my family's living standards."***





## Sumitraben

Sumitraben's journey from subsistence farming to becoming an agricultural entrepreneur in Dabhada is marked by her successful venture into goat rearing, which significantly contributed to her increased income and improved livelihood. Initially relying on maize for sustenance, Sumitraben faced challenges such as unpredictable seasonal income. However, her life took a positive turn with the intervention of CInI and her unwavering determination.

One of the key aspects of Sumitraben's success was her transition to goat rearing, a venture that provided a stable source of income throughout the year. This shift not only diversified her income sources but also reduced her reliance on seasonal crops, mitigating the risks associated with agricultural fluctuations. Additionally, goat rearing required less labor compared to traditional farming, allowing Sumitraben to focus on her children's education.

The program implemented by CInI also played a crucial role in Sumitraben's success. Through education, resources, and modern agricultural techniques, Sumitraben learned the benefits of crop diversification and year-round vegetable farming.

As a result of these interventions, Sumitraben's annual income increased significantly, reaching between 1.5 to 2 lakhs per year. This financial stability not only improved her family's quality of life but also empowered her to invest in her children's education, breaking the cycle of poverty.

Sumitraben's journey is a testament to the transformative impact of empowerment programs and modern farming practices in rural agriculture. Her success in goat rearing highlights the potential for positive change and sustainable livelihoods in rural communities. Sumitraben's story serves as an inspiration, showcasing how determination and access to resources can lead to prosperity and a brighter future in agriculture.

***"Thanks to CInI- STT GDC, India program, I've not only transformed my family's income but also ensured a better future for my children through education."***



## Nalitaben

In rural India, where agriculture is fundamental, individuals like Nalitaben from Padha have encountered challenges and opportunities. This case study explores Nalitaben's inspiring journey, catalyzed by her participation in a program by CInI and ST Telemedia, showcasing the potential of sustainable agriculture initiatives to uplift lives.

Nalitaben's family traditionally relied on farming, primarily growing maize for sustenance with little surplus for economic growth. Their challenges included modest income, inadequate for daily expenses and education, and living conditions needing improvement.

With ST Telemedia's program, Nalitaben transitioned to cultivating high-value vegetable crops, significantly increasing their income to 70-80K rupees annually. This stability enabled them to build a more comfortable home and invest in their children's education, breaking the cycle of limited access to education.

Nalitaben emerged as an inspirational figure, sharing her knowledge and encouraging others to adopt modern techniques. Her journey highlights the transformative power of sustainable agriculture, offering hope and inspiration to rural communities. ST Telemedia's program demonstrates that with knowledge and determination, rural communities can cultivate prosperity and create a brighter future.

***“Transitioning from traditional maize farming to high-value vegetables has not only transformed our income but also our way of life, enabling us to build a better home and invest in our children’s education.”***





## Ushaben

In rural India, agriculture is not just a way of life but a lifeline for families like Ushaben's from Usara. This case study explores Ushaben's transformative journey, ignited by her participation in the Lakhpati Kisaan Yojana by CInI and ST Telemedia, highlighting the power of sustainable agriculture initiatives.

Ushaben's family relied on traditional farming, growing staple crops like maize, with limited surplus for economic growth. Challenges included modest income, aspirations for better education, and issues like unwanted grass hampering crop growth.

Through the program, Ushaben learned modern farming techniques, including mulching, which significantly improved crop yields. This shift to high-value vegetable crops substantially increased their income, empowering them to invest in their family's welfare and education.

Ushaben's success story has become a beacon for neighboring villages, showcasing the potential of sustainable farming practices to increase income and improve livelihoods. Her journey exemplifies the transformative power of knowledge, determination, and modern farming practices in creating a brighter future for rural communities.

***“Embracing modern farming techniques like mulching has not only boosted our crop yields but also our income, allowing us to invest in our family's welfare and education.”***





## Kalsava Parvatiben Bhursingbhai

In the serene village of Atharsumba, situated in the Limkheda Block, lived Kalsava Parvatiben Bhursingbhai, a small tribal farmer, about to embark on a transformative journey. At 42, and a mother of seven, Kalsava owned 2.5 acres of land, which, until recently, had yielded modest returns due to rain-fed agriculture. However, the introduction of the Lakhpati Kisan Program in 2020-21, supported by STT GDC, India and implemented by CInI, NMSWDF, and Horticulture Federation, Limkheda, marked a turning point in her life.

Before joining the program, Kalsava faced challenges due to the lack of irrigation facilities, proper knowledge, and access to quality inputs and extension services. She primarily cultivated cereal and pulse crops, with maize and pigeon peas as intercrops, facing low production and income due to unpredictable rain patterns.

Enrolling in the Lakhpati Kisan Program brought promising changes to Kalsava's life. The program's interventions focused on agriculture and animal husbandry, enhancing irrigation resources, providing livelihood plans, affordable inputs, training, and exposure. Armed with new knowledge and resources, Kalsava adopted best practices, diversifying into floriculture and vegetable cultivation alongside traditional crops, boosting her productivity and income.

One significant shift was Kalsava's transition into a nursery entrepreneur, nurturing healthy seedlings and earning recognition as a social start-up. This venture into floriculture, particularly rose cultivation, proved to be a profitable decision, further enhancing her income and financial stability.

The program's impact on Kalsava's income was remarkable, lifting her family's financial security and prosperity. Their increased savings allowed for a new house, vehicles, and children's education, improving their quality of life. Kalsava's journey inspired her village, showcasing the program's potential in empowering marginalized farmers and driving sustainable change in rural communities.

***"The Lakhpati Kisan Program has been a game-changer for me, transforming my modest returns into a thriving agricultural enterprise, especially through ventures like rose cultivation, and ensuring a brighter future for my family."***





## Savitaben

Savitaben, a resident of Padha, embarked on a transformative journey in agriculture that not only increased her family's income but also improved their quality of life. Initially focusing on maize cultivation, the family later diversified into growing saplings of cauliflower and cabbage. Challenges such as limited income, lack of crop variety, and access to resources prompted them to seek new opportunities.

Their journey took a significant turn with their involvement in the Lakhpati Kisaan Program, which introduced crop diversification, improved techniques, access to better seeds, and irrigation support. This initiative led to a substantial increase in Savitaben's income, from 10-20,000 rupees annually to nearly a lakh per year. She successfully expanded her market reach during the COVID-19 pandemic, ensuring financial stability and enabling investments in her children's education and livestock care.

Savitaben's success can be attributed to her determination and the guidance provided by ST Telemedia, which played a crucial role in sharing knowledge and encouraging her to adopt modern farming practices. Her journey underscores the transformative power of innovative agricultural programs, inspiring rural farmers to improve their income and living standards. Savitaben's story is a testament to the importance of empowering farmers with resources and support to drive rural development and prosperity.

***"Thanks to the program by STT GDC, India and CInI, our family's income soared, enabling us to overcome challenges and secure a better future through diversified farming and improved agricultural practices."***







## Sakriben

Sakriben, a determined farmer from Kirkhai, embarked on an inspiring journey of agricultural transformation that not only significantly increased her income but also enhanced her family's quality of life. This case study delves into Sakriben's remarkable story, illustrating how sustainable farming practices, access to essential resources, and crop diversification can uplift rural livelihoods. It also explores the pivotal role of the Lakhpati Kisaan Program, along with the guidance from STT GDC, India and CInI, in guiding her towards success.

Initially focusing on mangoes and lemons, Sakriben's family relied on traditional farming practices and faced challenges such as limited income, inefficient water supply, and dependence on external resources for irrigation.

Joining the Lakhpati Kisaan Yojana transformed Sakriben's life. The program provided access to solar power services, encouraging sustainable farming practices, including crop diversification. Sakriben diversified her plantation by adding strawberries, known for their high returns.

The program's impact was profound. Solar-powered irrigation improved water distribution, leading to a threefold increase in Sakriben's income. She also improved her living standards, investing in her children's education and adopting better farming methods.

Sakriben's success is attributed to her determination and guidance from STT GDC, India and CInI. Her journey from conventional to sustainable farming practices, solar power adoption, and crop diversification is a testament to the transformative power of modern agricultural programs. Her story inspires rural farmers and underscores the importance of empowering them with knowledge, resources, and sustainable practices for rural development and a better quality of life.

***"Through the Lakhpati Kisaan Program, my income tripled through strawberry farming, allowing me to invest in my children's education and improve our farming methods, demonstrating the life-changing impact of sustainable agriculture."***









# Conclusion

The stories shared in this coffee table book from Limkheda are not just narratives of individual triumphs; they are testaments to the resilience, ingenuity, and spirit of rural communities. Through sustainable agriculture initiatives like the Lakhpatti Kisaan Program, supported by organizations like STT GDC, India and CInI, these farmers have not only transformed their own lives but have also paved the way for a brighter future for generations to come. Their journeys underscore the potential for sustainable agriculture to uplift rural livelihoods, promote economic growth, and foster sustainable development. As we celebrate these inspiring tales, let us also recognize the importance of continued support, innovation, and collaboration in ensuring the prosperity of rural communities everywhere.















Photography and Editing by  
**Ravi Kant**

Assistant Photography  
**Prateek**

Written by  
**Priyanka**

Design  
**Madhavan Lakshmikumar**

EXPRESSIVE LIFE

Production House  
**Rashmi,**  
Expressive Life  
Email: [expressivelifeofficial@gmail.com](mailto:expressivelifeofficial@gmail.com)  
Website: [www.expressivelife.co.in](http://www.expressivelife.co.in)





### Head Office India

E-620 East Layout, Near Bortalla Durga  
Puja Maidan, Sonari, Jamshedpur-891011  
Jharkhand Tel: 0657-2319259

### West India

3 Sanidhya Bungalows, Iskon-Bopal Road  
Nr. Ashok Vatika, Ahmedabad-380058 Gujarat  
Tel: 079-26936401

[www.cinicell.org](http://www.cinicell.org)

Email: [info@cinicell.org](mailto:info@cinicell.org)

